

MRT *EASY*

OTOČNÉ TELESKOPICKÉ MANIPULÁTORY

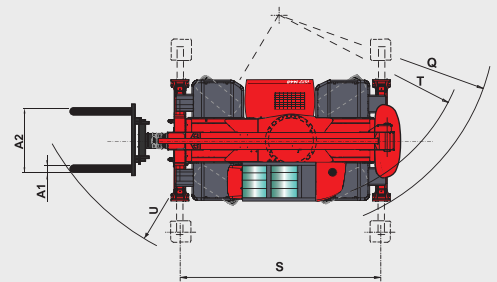
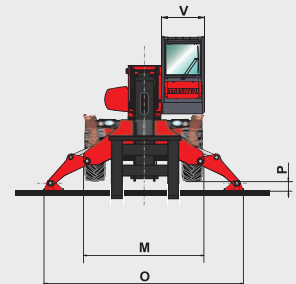
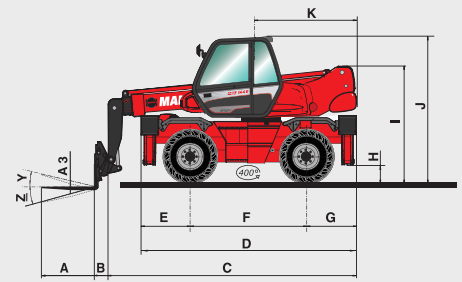


 **MANITOU**

www.manitou.com

MRT EASY

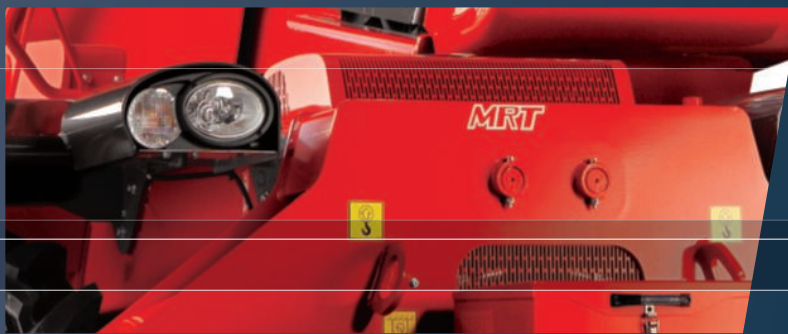
	MRT 1440	MRT 1640	MRT 1840
Nosnost (na patkách) v 500 mm na paletizačních vidlicích	4000 kg		
Výška zdvihu	13.80 m	15.80 m	17.90 m
Pneu	400/70 - 20 14 PR		
Vidle (mm) Délka x Šířka x Tloušťka	1200x125x50		
Brzdy	vícediskové brzdy s hydraul. asistencí u obou náprav		
Obsluha brzd	NE		
Parkovací brzda	NE		
Motor - PERKINS STAGE III A	1104D-44To		
Objem	4 cyl. - 4400 cm ³		
V ý k o n v 2 2 0 0 r p m (I S O / T R 1 4 3 9 6)	101 HP/74.5 kW		
M a x . o t á č k y 1 4 0 0 r p m (I S O / T R 1 4 3 9 6)	392 Nm		
Vstřikování	přímé		
Chlazení	voda		
D Y j c X c j _ U	hydrostatic_z 'g' automatic_c i ' regulaW j _ c b i ' (d t h c j f ' Y f d U X ' c ' U ' a c h c f t Y Y _ f c a U [b Y h] W		
J c '] ' f m W ' c g h]	2/2		
D c Y h f m W ' c g h t (j d Y X # j n U X)	32 kph		
M a x . W g h c j b t f m W ' c g h	32 kph		
NUXbřbzdfUj U	automatický zámek výkyvu zadní nápravy a rotace.		
4 stabilizátory	současně nebo jednotlivě ovládané		
Rotace (Volitelná 360° kontinuální rotace)			
Hydraulika 2 čerpadla	115 l/min - 270 bar		
Ovládání	2 elektro proporcionalně ovládané joysticky pro veškerý hyd. pohyb		
Objemy			
Chladicí systém	25 l		
Motorový olej	8.10 l		
Převodový olej	150 l		
Palivová nádrž	130 l		
Pohotovostní hmotnost (s vidlemi)	12490 kg	13000 kg	13300 kg
Celková šířka	2.40 m		
Celková výška	2.97 m		
Délka (po desku s vidlemi)	5.35 m	6.36 m	5.54 m
Poloměr otáčení	0.34 m		
Tažná síla	8600 daN		
Hluk a vibrace			
Hluk při pojezdu (LpA)	79.7 dB		
Okolní hluk (LwA)	104 dB		
Vibrace celková - ruka/rameno	< 2.5 m/s ²		
Bezpečnost	bezpečnostní systém jako u mobilních jeřábů		



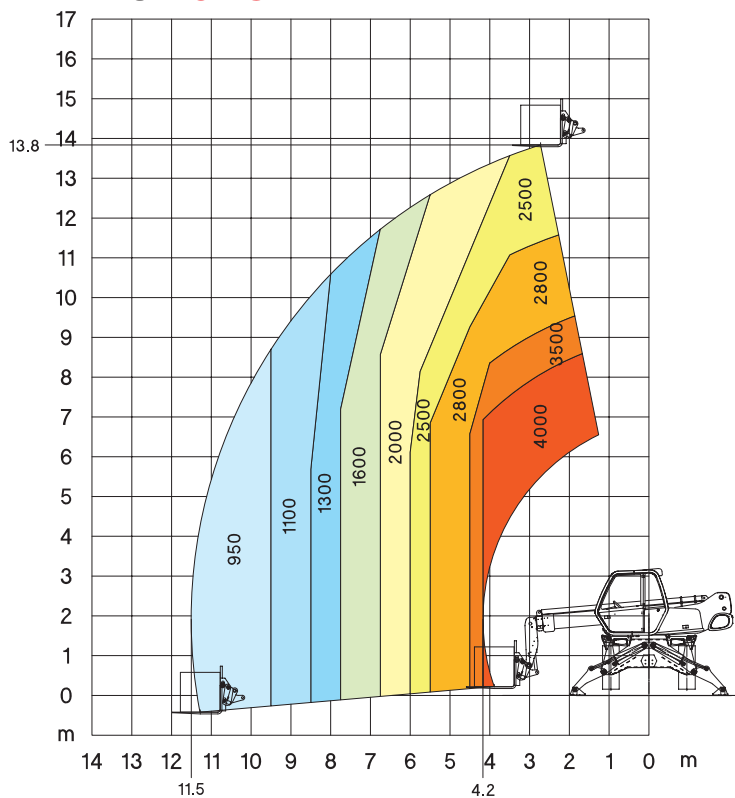
mm	MRT 1440	MRT 1640	MRT 1840
A		1200	
A1		125	
A2		1320	
A3		50	
B		290	
C	5060	6075	5255
D		4350	
E		1015	
F		2320	
G		1015	
H		340	
I		2375	
J		2970	
K	2040		2485
M		2400	
O		3975	
P		160	
Q		3900	
S		4000	
T		3600	
U	5250	5520	5235
V		950	
Y		12°	
Z		105°	

MRT 1440

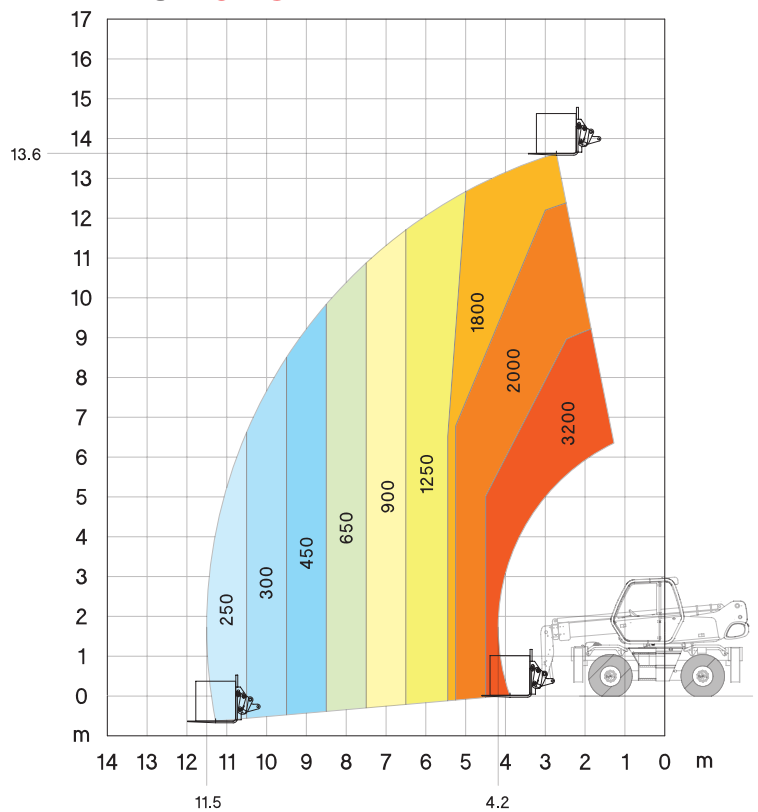
Crane //



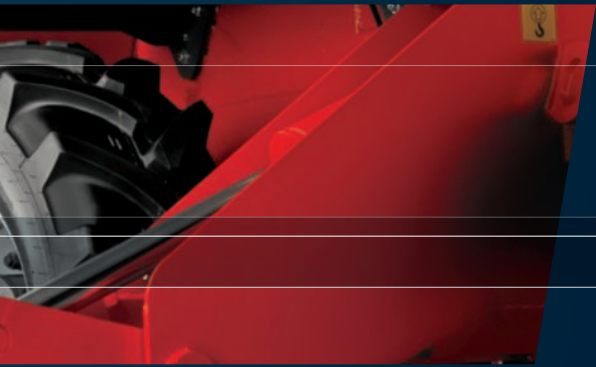
**Rotation on stabilizers
with forks**



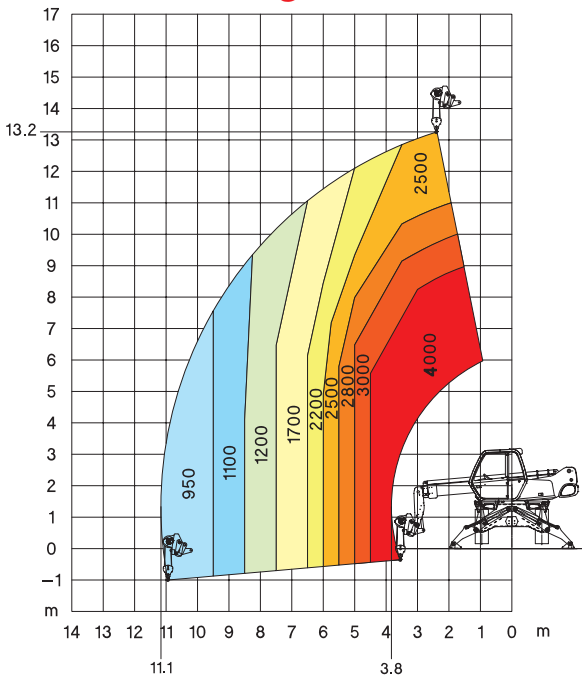
**Frontal on tyre
with forks**



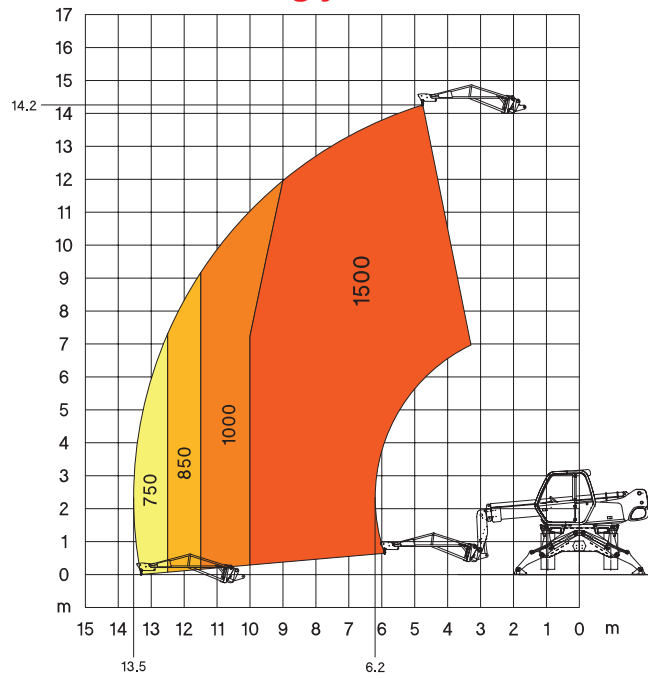
Telehandler // Platform



**Rotation on stabilizers
with 4000 kg winch**

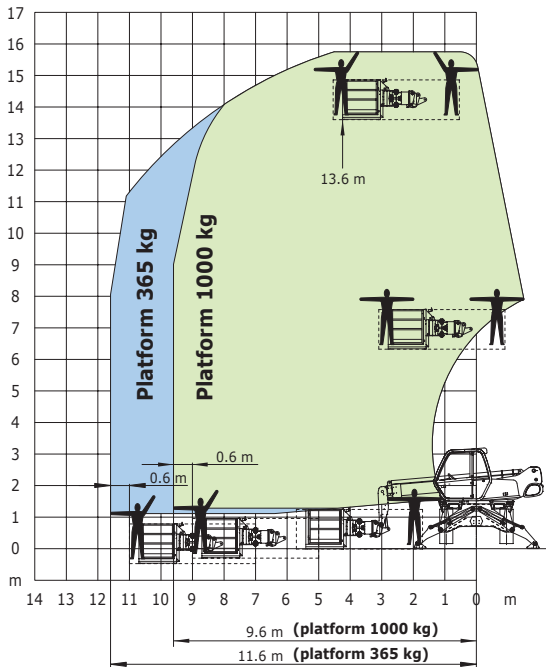


**Rotation on stabilizers
with 1500 kg jib**

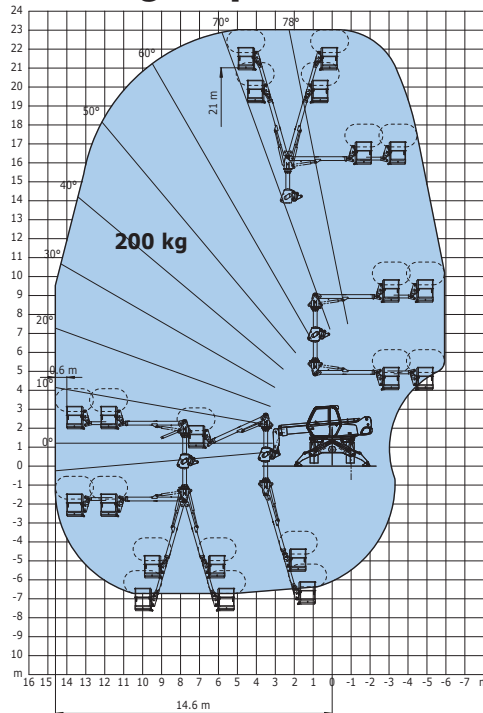


**Rotation on stabilizers
with 365/1000 kg platform
2.25 / 4 m - 3 persons**

Platform 365 kg and 1000 kg



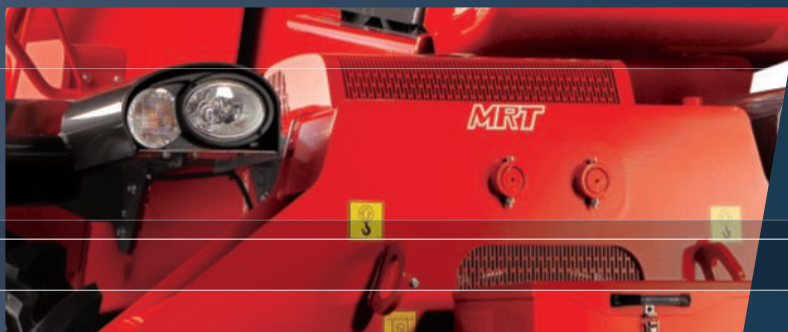
**Rotation on stabilizers
with Aerial platform jib 2
200 kg - 2 persons**



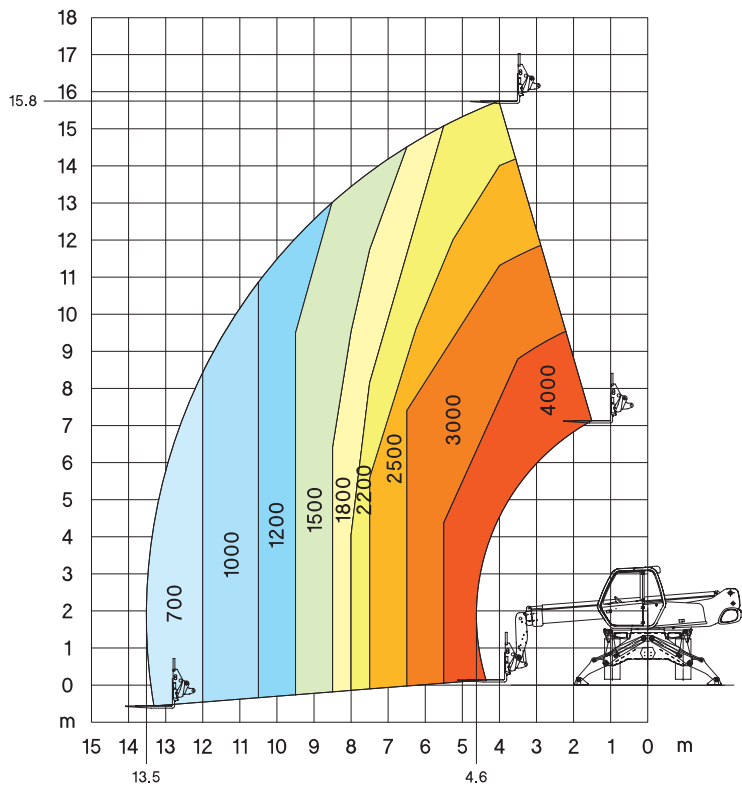
WRT 1440

MRT 1640

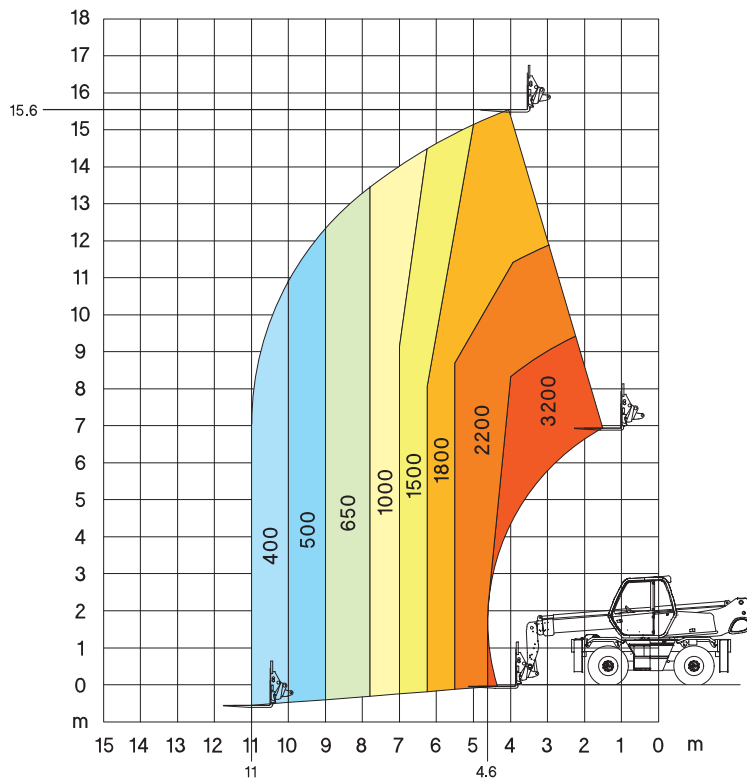
Crane //



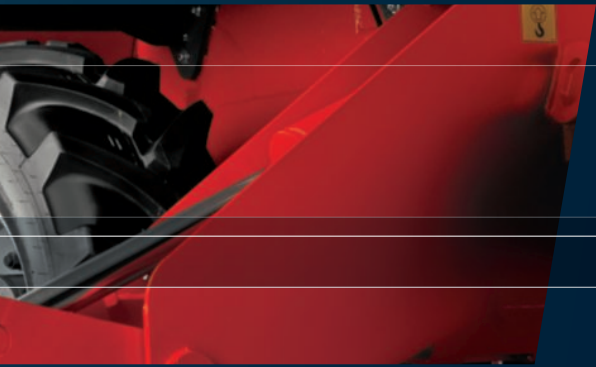
Rotation on stabilizers
with **forks**



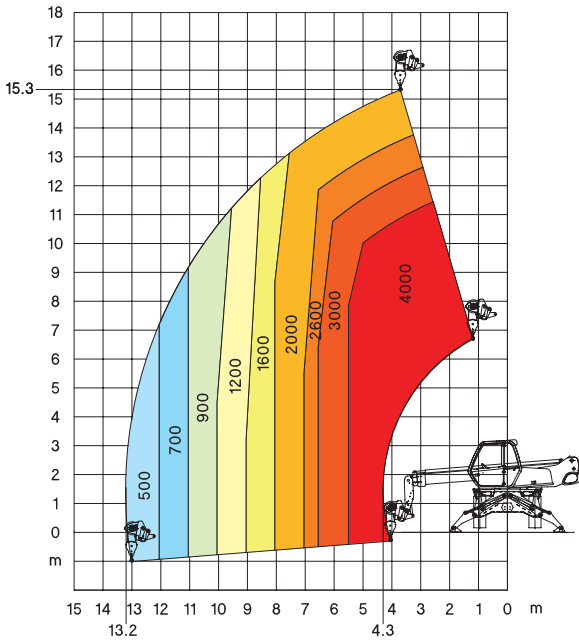
Frontal on tyre
with **forks**



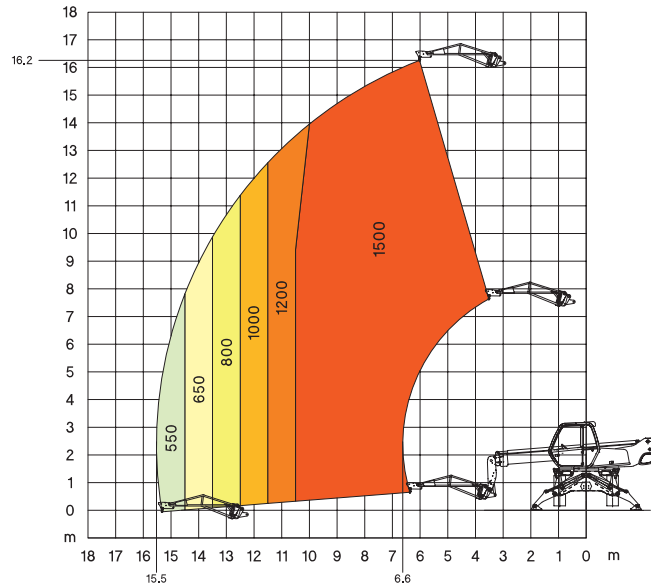
Telehandler // Platform



Rotation on stabilizers
with **4000 kg winch**

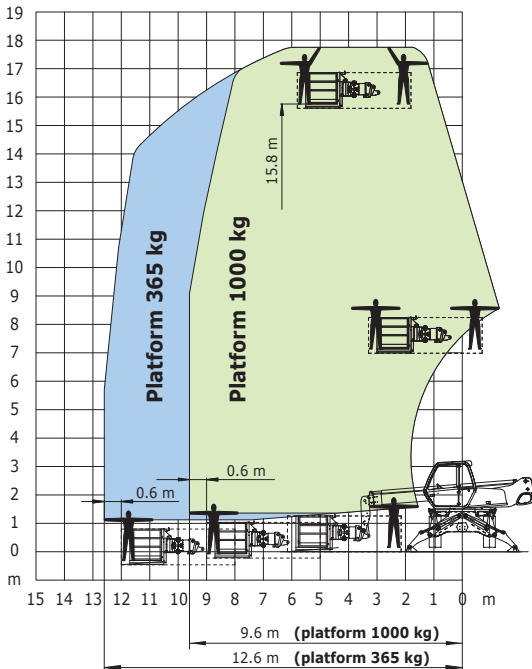


Rotation on stabilizers
with **1500 kg jib**

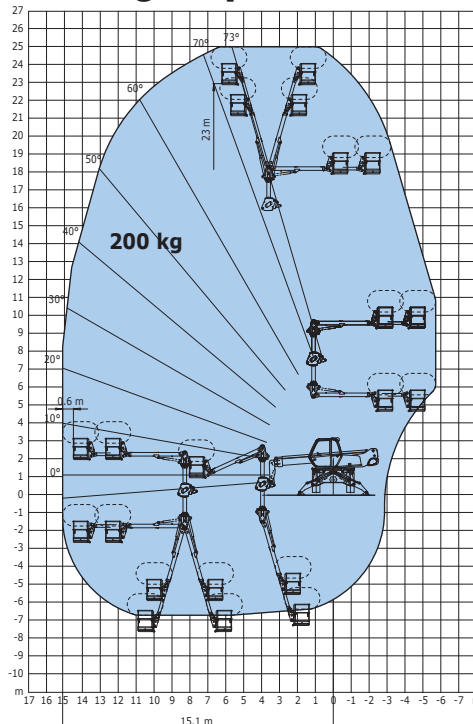


Rotation on stabilizers
with **365/1000 kg platform**
2.25 / 4 m - 3 persons

Platform 365 kg and 1000 kg



Rotation on stabilizers
with **Aerial platform jib 2**
200 kg - 2 persons



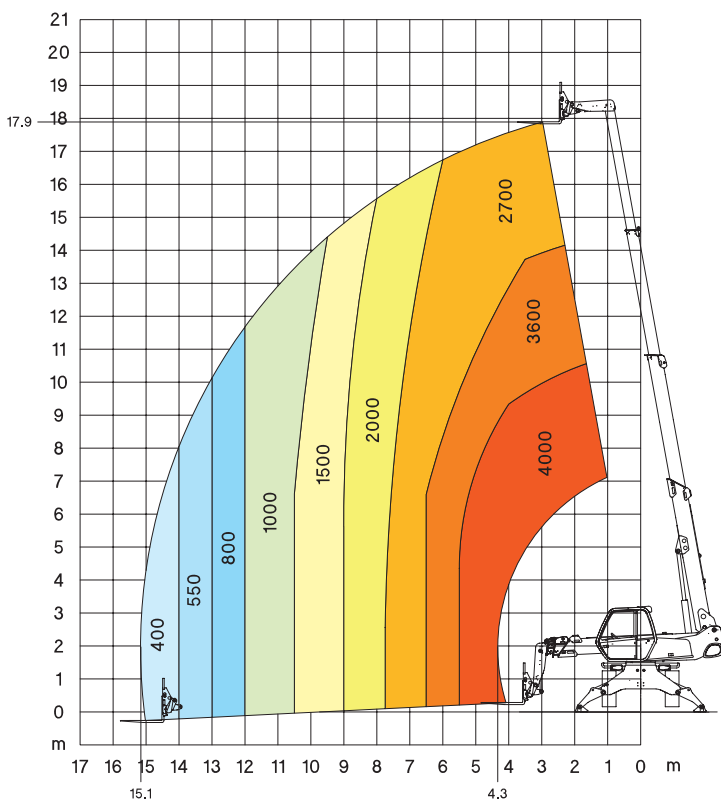
// WRT 1640

MRT 1840

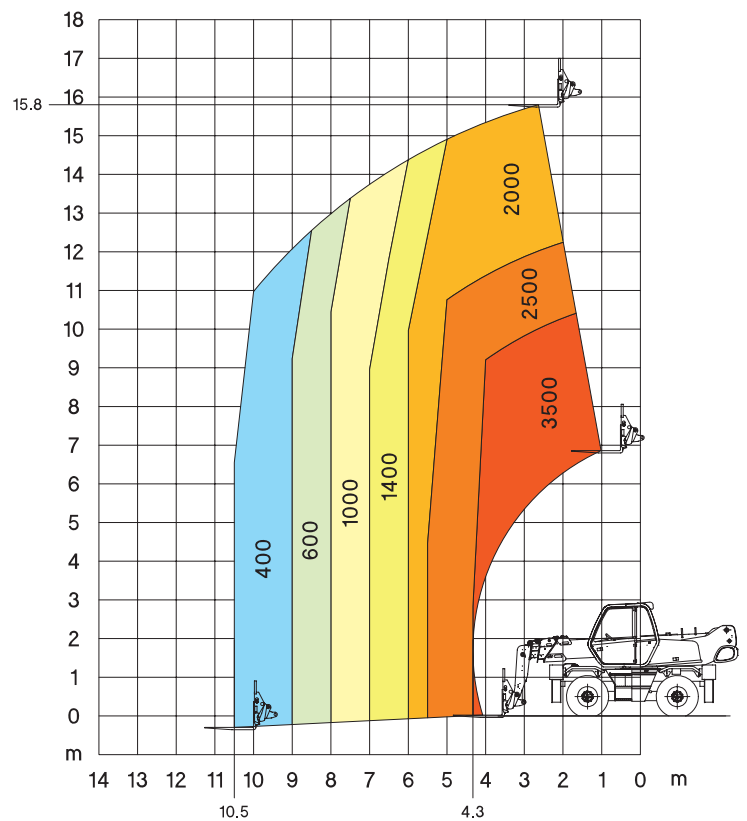
Crane //



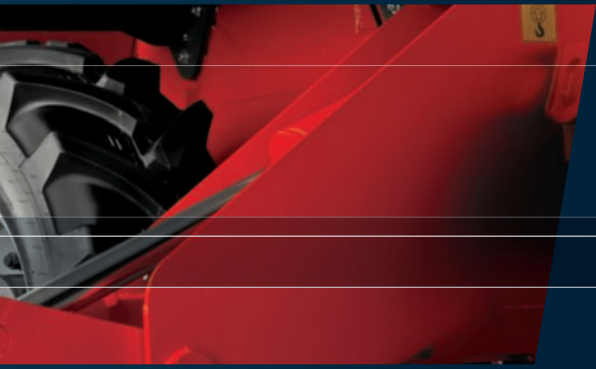
**Rotation on stabilizers
with forks**



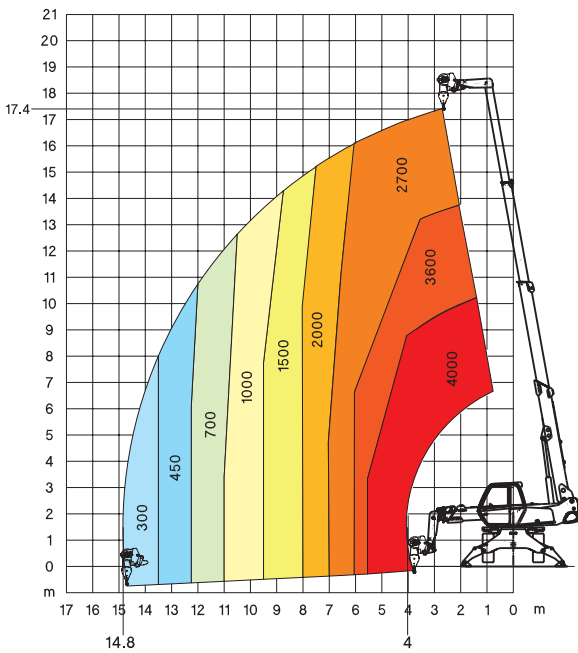
**Frontal on tyre
with forks**



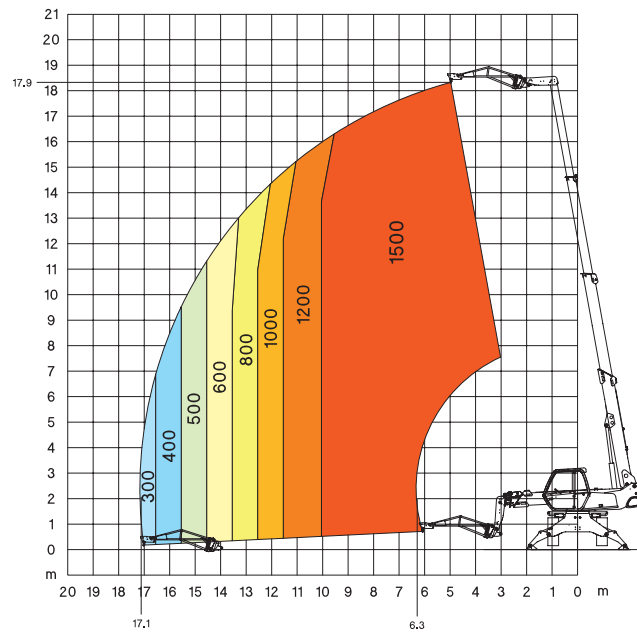
Telehandler // Platform



Rotation on stabilizers
with **4000 kg winch**

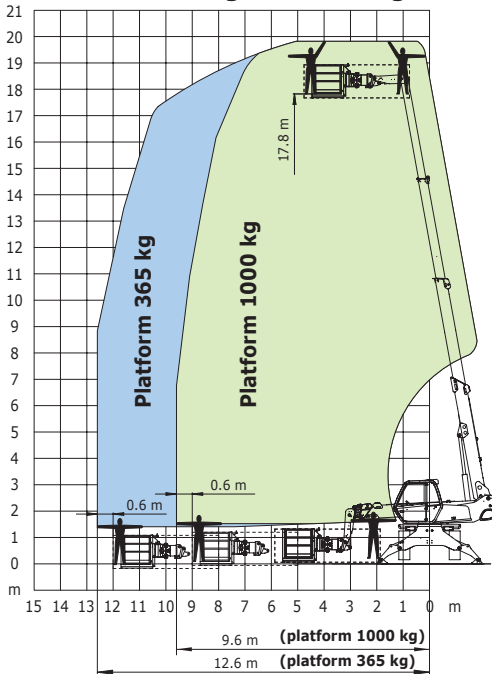


Rotation on stabilizers
with **1500 kg jib**

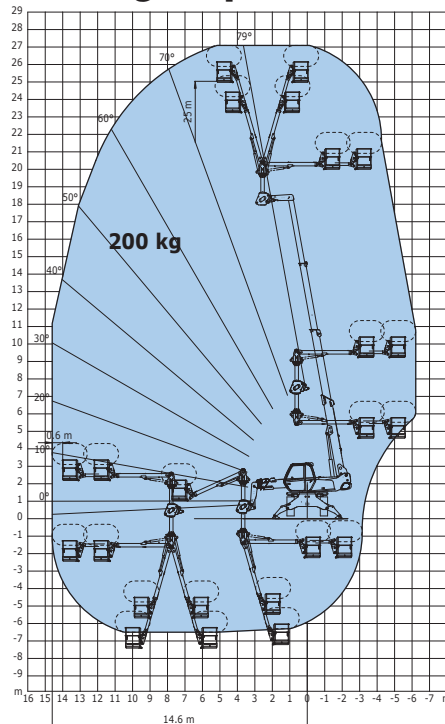


Rotation on stabilizers
with **365/1000 kg platform**
2.25 / 4 m - 3 persons

Platform 365 kg and 1000 kg



Rotation on stabilizers
with **Aerial platform jib 2**
200 kg - 2 persons



WRT 1840

NET spol. s r.o.
Čechyňská 23, Brno PSČ:
602 00, ČR, IČ:18828141
PROVOZOVNÁ:
NET spol. s r.o. ,
Huštěnovice 370, Babice
687 03, Tel: 572 586 163



Výhradní dovozce:
NET spol. s r.o. Čechyňská 23, Brno 602 00, ČR, Tel:572
586 163, www.manitou-net.cz

CE This brochure describes versions and configuration options for Manitou products which may be fitted with different equipment. The equipment described in this brochure may be standard, optional or not available depending on version. Manitou reserves the right to change the specifications shown and described at any time and without prior warning. The manufacturer is not liable for the specifications given. For more information, contact your Manitou dealer. Non-contractual document. Product descriptions may differ from actual products. List of specifications is not comprehensive. The logos and visual identity of the company are the property of Manitou and may not be used without authorisation. All rights reserved. The photos and diagrams contained in this brochure are provided for information only.