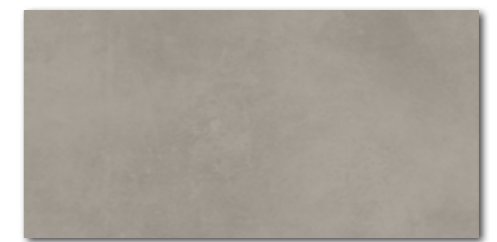


WADV820
 ○ 76 | m²
 mat | matt | **V3**

WARV820
 ○ 78 | m²
 mat | matt | **V3**

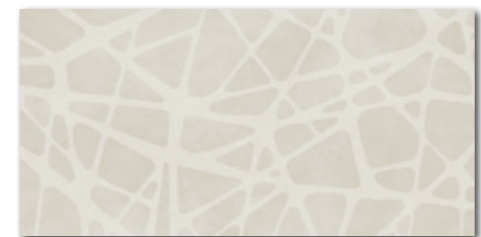


WADV821
 ○ 76 | m²
 mat | matt | **V3**

WARV821
 ○ 78 | m²
 mat | matt | **V3**



WADV826
 ○ 84 | m²
 matlesk | mattglossy | **V4**



WARV833
 ○ 84 | m²
 matlesk | mattglossy | **V4**



WARV831
 ○ 84 | m²
 matlesk | mattglossy | **V4**



WDM05820 (SET)
 ○ 66 | set
 mat | matt
 slonová kost | ivory



WDM05821 (SET)
 ○ 66 | set
 mat | matt
 hnědošedá | brown-grey



30x60

News

RAKO Home

5x5 | 30x30



výrobek | product

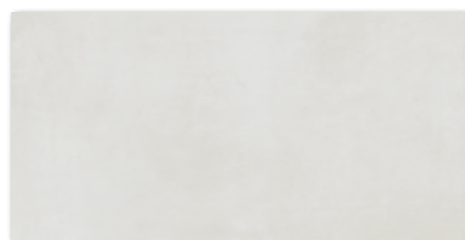


obkládačka wall tile	30x60	298x598x8	EN 14411 - L BIII	8	5,56	1,44	40	57,60	21,3	14,8	876
mozaika set 30x30 cm mosaic sheet 30x30 cm	5x5	48x48x8	STO č. 030 - 059826	4	11	0,36	-	-	5,2	14,8	-

ⓘ Balení výrobku obsahuje nahoditý mix designů. | The products are deliberately mixed in packing to include a random selection of designs.

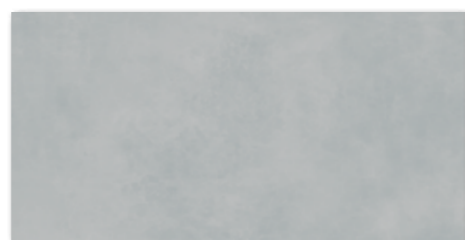


30x60



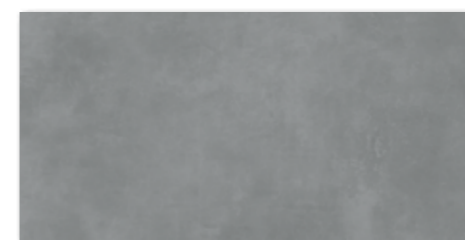
WADVK822
○ 76 | m²
mat | matt | **V3**

WARVK822
○ 78 | m²
mat | matt | **V3**



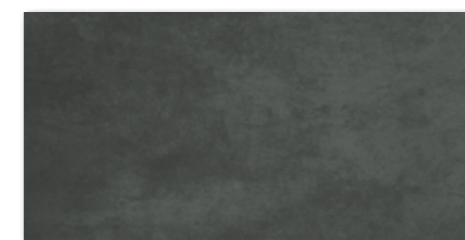
WADVK823
○ 76 | m²
mat | matt | **V3**

WARVK823
○ 78 | m²
mat | matt | **V3**



WADVK824
○ 76 | m²
mat | matt | **V3**

WARVK824
○ 78 | m²
mat | matt | **V3**



WADVK825
○ 76 | m²
mat | matt | **V3**

WARVK825
○ 78 | m²
mat | matt | **V3**



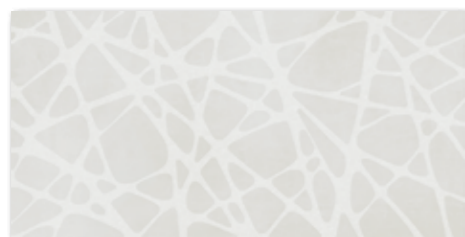
WADVK827
○ 84 | m²
matlesk | mattlglossy | **V4**



WADVK828
○ 84 | m²
matlesk | mattlglossy | **V4**



WADVK829
○ 84 | m²
matlesk | mattlglossy | **V4**



WARVK834
○ 84 | m²
matlesk | mattlglossy | **V4**



WARVK835
○ 84 | m²
matlesk | mattlglossy | **V4**



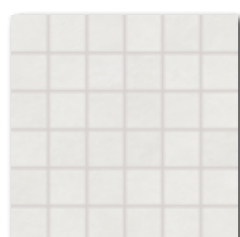
WARVK836
○ 84 | m²
matlesk | mattlglossy | **V4**



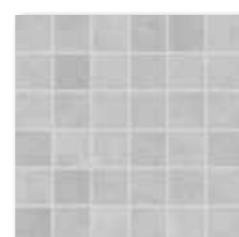
WARVK832
○ 84 | m²
matlesk | mattlglossy | **V4**



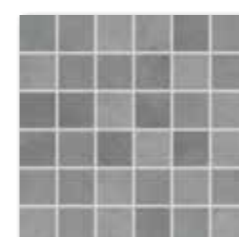
5x5 | 30x30



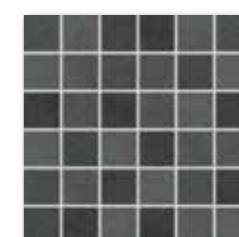
WDM05822 (SET)
○ 66 | set
mat | matt
bílá | white



WDM05823 (SET)
○ 66 | set
mat | matt
světle šedá | light grey



WDM05824 (SET)
○ 66 | set
mat | matt
tmavě šedá | dark grey



WDM05825 (SET)
○ 66 | set
mat | matt
černá | black

5x5 | 30x30



výrobek | product



EN



ks/m²



m²



kg



kg/m²



brutto kg

obkládačka | wall tile 30x60 298x598x8 EN 14411 - L BIII 8 5,56 1,44 40 57,60 21,3 14,8 876
mozaika set 30x30 cm | mosaic sheet 30x30 cm 5x5 48x48x8 STO č. 030 - 059826 4 11 0,36 - - 5,2 14,8 -

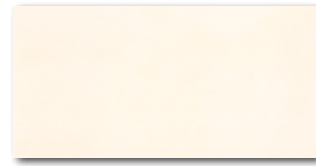
i Balení výrobku obsahuje nahoditý mix designů. | The products are deliberately mixed in packing to include a random selection of designs.



20×40



WADMB719
○ 68 l m²
mat | matt | **V2**
bíloběžová | white-beige



WADMB720
○ 68 l m²
mat | matt | **V2**



WADMB721
○ 68 l m²
mat | matt | **V2**



WADMB722
○ 68 l m²
mat | matt | **V2**

bílošedá | white-grey



WADMB723
○ 68 l m²
mat | matt | **V2**



WADMB724
○ 68 l m²
mat | matt | **V2**



20×40

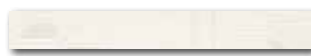


WADM220
○ 76 l m²
mat | matt | **V4**
slonová kost | ivory



WADM223
○ 76 l m²
mat | matt | **V4**
světle šedá | light grey

40×4,8

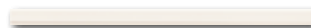


WLAMH719
○ 50 l ks
matlesk | mattglossy



WLAMH722
○ 50 l ks
matlesk | mattglossy

40×2



WLRMG719
○ 52 l ks
mat | matt



WLRMG720
○ 52 l ks
mat | matt



WLRMG721
○ 52 l ks
mat | matt



WLRMG722
○ 52 l ks
mat | matt

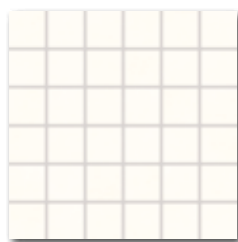
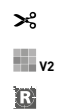


WLRMG723
○ 52 l ks
mat | matt

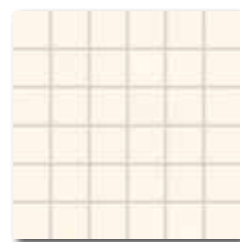


WLRMG724
○ 52 l ks
mat | matt

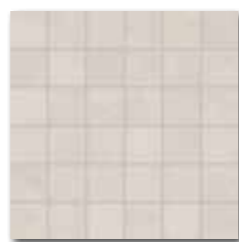
5×5 | 30×30



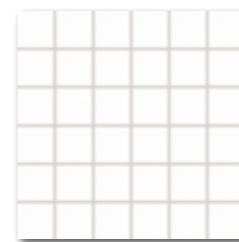
WDM05719 (SET)
○ 66 l set
mat | matt
bíloběžová | white-beige



WDM05720 (SET)
○ 66 l set
mat | matt
slonová kost | ivory



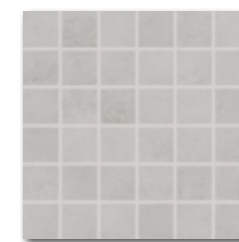
WDM05721 (SET)
○ 66 l set
mat | matt
hnědošedá | brown-grey



WDM05722 (SET)
○ 66 l set
mat | matt
bílošedá | white-grey



WDM05723 (SET)
○ 66 l set
mat | matt
světle šedá | light grey

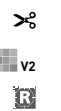


WDM05724 (SET)
○ 66 l set
mat | matt
tmavě šedá | dark grey

40×4,8

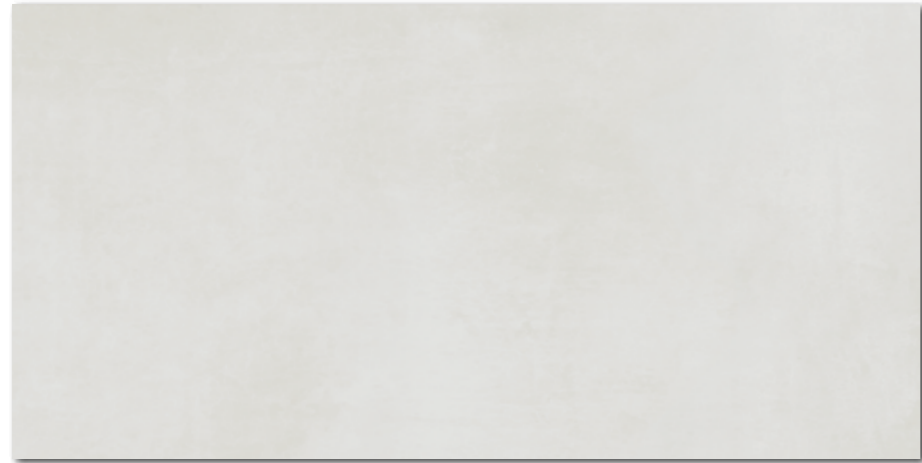
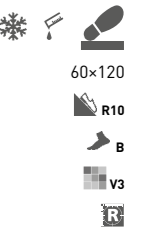
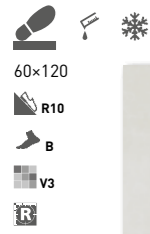
40×2

5×5 | 30×30



výrobek product	cm	mm	EN	ks/m ²	m ²	kg	brutto kg
obkladáčka wall tile	20×40	198×398×7	EN 14411 - L BIII	20	12,5	1,60	48
listela listel	40×4,8	398×48×7	EN 14411 - L BIII	7	52,1	0,13	-
reliéfní listela relief listel	40×2	398×20	STO č. 030 - 060753	12	125	0,09	-
mozaika set 30x30 cm mosaic sheet 30x30 cm	5×5	48×48×7	STO č. 030 - 059826	3/4	11	0,27/0,36	-
							76,80
							20,6
							12,9
							13,6
							18,9
							12,9

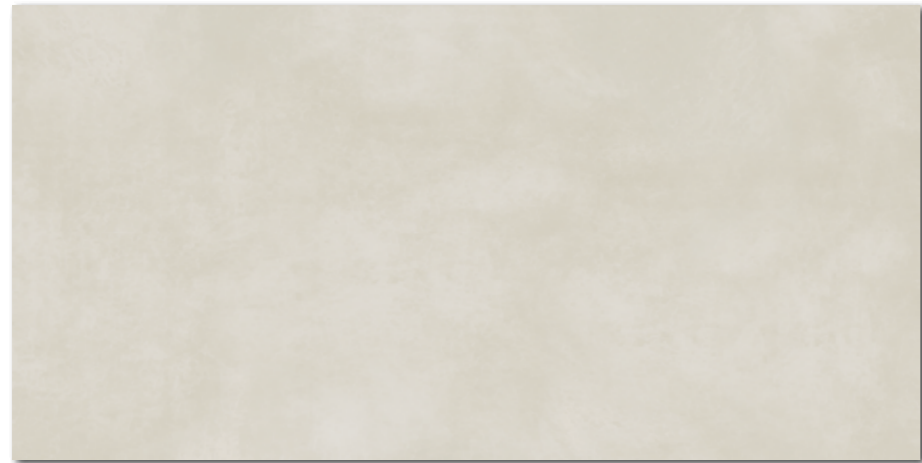
! Balení výrobku obsahuje nahodilý mix designů. | The products are deliberately mixed in packing to include a random selection of designs.



DARV1722
PEI 5 \odot 93 | m²
mat | matt
bílá | white



DARV1723
PEI 4 \odot 93 | m²
mat | matt
světle šedá | light grey



DARV1720
PEI 5 \odot 93 | m²
mat | matt
slonová kost | ivory



DARV1724
PEI 4 \odot 93 | m²
mat | matt
tmavě šedá | dark grey



DARV1721
PEI 4 \odot 93 | m²
mat | matt
hnědošedá | brown-grey

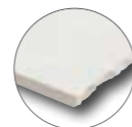


DARV1725
PEI 4 \odot 93 | m²
mat | matt
černá | black

výrobek | product



dlaždice | floor tile 60x120 598x1198x10 EN 14411 - G B1a 2 1,4 1,44 27 38,88 32,7 22,7 908

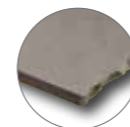


DAR81722
PEI 5 ○ 89 | m²
mat | matt



DAR84722
PEI 5 ○ 89 | m²
mat | matt

bílá | white



DAR81720
PEI 5 ○ 89 | m²
mat | matt



DAR84720
PEI 5 ○ 89 | m²
mat | matt

slonová kost | ivory



DAR81721
PEI 4 ○ 89 | m²
mat | matt



DAR84721
PEI 4 ○ 89 | m²
mat | matt

hnědošedá | brown-grey



80x80

R10

B

V3

R

40x80

R10

B

V3

R

výrobek | product



dlaždice | floor tile
dlaždice | floor tile

80-80
40-80

798-798-10
398-798-10

EN 14411 - G Bla
EN 14411 - G Bla

2
4

1,6
3,1

1,28
1,28

42
42

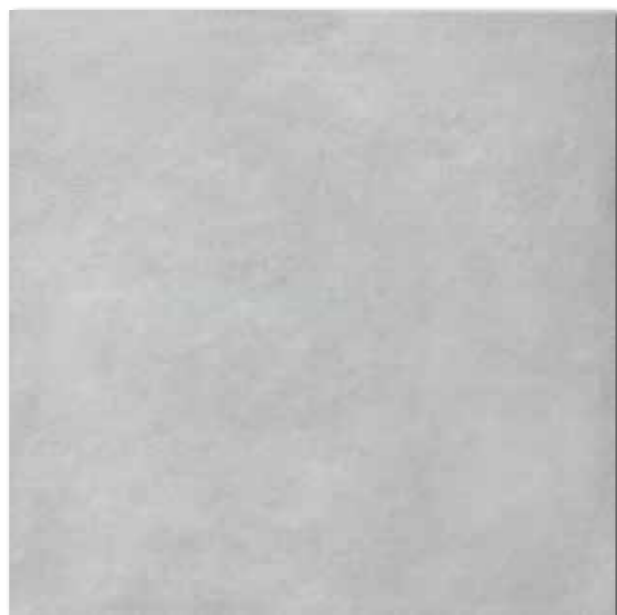
53,76
53,76

28,0
28,0

21,9
21,9

1 202
1 202

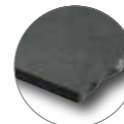
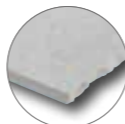
Doporučené skladby formátů viz str. 440. | Recommended combinations of modular sizes see page 440.



DAR81723
PEI 4 ○ 89 | m²
mat | matt



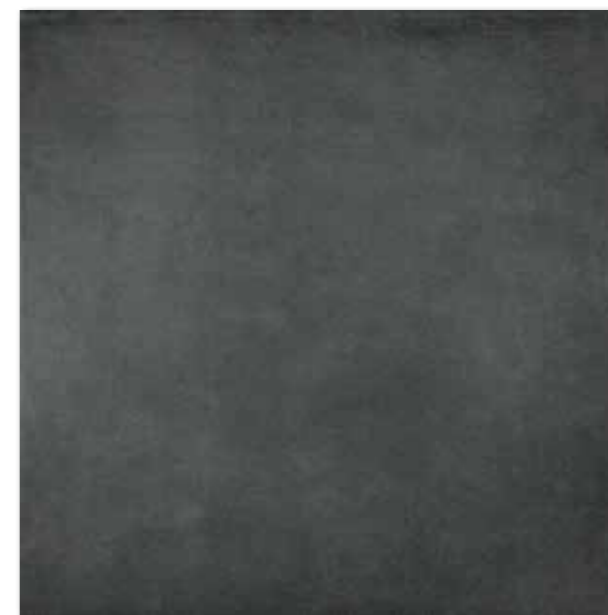
DAR84723
PEI 4 ○ 89 | m²
mat | matt
světle šedá | light grey



DAR81724
PEI 4 ○ 89 | m²
mat | matt



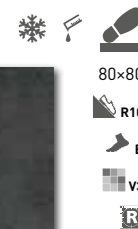
DAR84724
PEI 4 ○ 89 | m²
mat | matt
tmavě šedá | dark grey



DAR81725
PEI 4 ○ 89 | m²
mat | matt



DAR84725
PEI 4 ○ 89 | m²
mat | matt
černá | black



80x80

R10

B

V3

R

40x80

R10

B

V3

R

výrobek | product



dlaždice | floor tile
dlaždice | floor tile

80x80
40x80

798x798x10
398x798x10

EN 14411 - G Bla
EN 14411 - G Bla

2

1,6

1,28

42

53,76

28,0

21,9

1 202

4

3,1

1,28

42

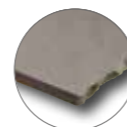
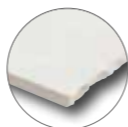
53,76

28,0

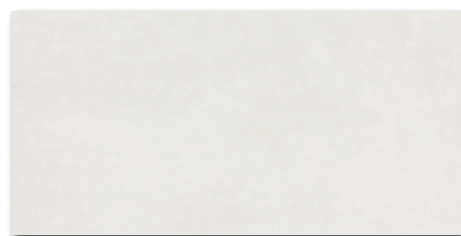
21,9

1 202

Doporučené skladby formátů viz str. 440. | Recommended combinations of modular sizes see page 440.



DAR63722
PEI 5 ○ 82 | m²
mat | matt



DARSE722
PEI 5 ○ 82 | m²
mat | matt



DAR4H722
PEI 5 ○ 76 | m²
mat | matt



DDVP4722
PEI 5 ○ 84 | set
mat | matt
bílá | white



DAR63720
PEI 5 ○ 82 | m²
mat | matt



DARSE720
PEI 5 ○ 82 | m²
mat | matt



DAR4H720
PEI 5 ○ 76 | m²
mat | matt



DDVP4720
PEI 5 ○ 84 | set
mat | matt
stonová kost | ivory



DAR63721
PEI 4 ○ 82 | m²
mat | matt



DARSE721
PEI 4 ○ 82 | m²
mat | matt



DAR4H721
PEI 4 ○ 76 | m²
mat | matt



DDVP4721
PEI 4 ○ 84 | set
mat | matt
hnědošedá | brown-grey



výrobek | product



EN



ks/m²



m²



kg



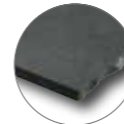
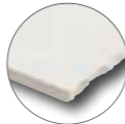
kg/m²



brutto kg

výrobek product	cm	mm	EN	ks/m ²	m ²	kg	kg/m ²	brutto kg			
dlaždice floor tile	60×60	598×598×10	EN 14411 - G Bla	3	2,8	1,08	32	34,56	23,7	21,9	782
dlaždice floor tile	30×60	298×598×10	EN 14411 - G Bla	6	5,6	1,08	40	43,20	23,7	21,9	971
dlaždice floor tile	45×45	445×445×8	EN 14411 - G Bla	6	5	1,21	34	41,14	21,1	17,4	741
dekor (set) decor (sheet)	30×45	298×445×8	EN 14411 - G Bla	5	7,4	0,68	36	-	10,5	17,4	-

Doporučené skladby formátů viz str. 440. | Recommended combinations of modular sizes see page 440.



DAR63723
PEI 4 \odot 82 | m²
mat | matt



DARSE723
PEI 4 \odot 82 | m²
mat | matt



DAR4H723
PEI 4 \odot 76 | m²
mat | matt



DDVP4723 (SET)
PEI 4 \odot 84 | set
mat | matt
světle šedá | light grey



DAR63724
PEI 4 \odot 82 | m²
mat | matt



DARSE724
PEI 4 \odot 82 | m²
mat | matt



DAR4H724
PEI 4 \odot 76 | m²
mat | matt



DDVP4724 (SET)
PEI 4 \odot 84 | set
mat | matt
tmavě šedá | dark grey



DAR63725
PEI 4 \odot 82 | m²
mat | matt



DARSE725
PEI 4 \odot 82 | m²
mat | matt



DAR4H725
PEI 4 \odot 76 | m²
mat | matt



DDVP4725 (SET)
PEI 4 \odot 84 | set
mat | matt
černá | black



výrobek product	cm	mm	EN	ks/m ²	m ²	kg	kg/m ²	brutto kg
dlaždice floor tile	60×60	598×598×10	EN 14411 - G Bla	3	2,8	1,08	32	34,56
dlaždice floor tile	30×60	298×598×10	EN 14411 - G Bla	6	5,6	1,08	40	43,20
dlaždice floor tile	45×45	445×445×8	EN 14411 - G Bla	6	5	1,21	34	41,14
dekor (set) decor (sheet)	30×45	298×445×8	EN 14411 - G Bla	5	7,4	0,68	36	10,5

Doporučené skladby formátů viz str. 440. | Recommended combinations of modular sizes see page 440.



30x30
20x20
10x10
5x5 | 30x30

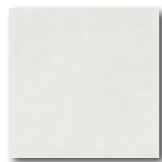
R10

B

V3



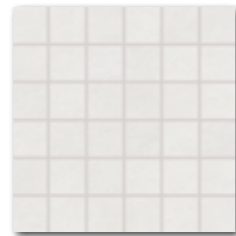
DAR34722
PEI 5 \varnothing 74 | m²
mat | matt
bílá | white



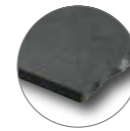
DAR26722
PEI 5 \varnothing 90 | m²
mat | matt



DAR12722 (SET)
PEI 5 \varnothing 94 | m²
mat | matt



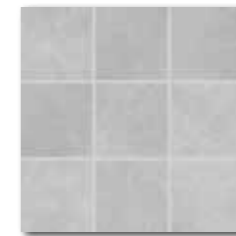
DDM06722 (SET)
PEI 5 \varnothing 72 | set
mat | matt



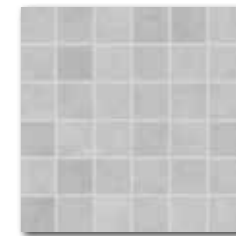
DAR34723
PEI 4 \varnothing 74 | m²
mat | matt
světle šedá | light grey



DAR26723
PEI 4 \varnothing 90 | m²
mat | matt



DAR12723 (SET)
PEI 4 \varnothing 94 | m²
mat | matt



DDM06723 (SET)
PEI 4 \varnothing 72 | set
mat | matt



30x30
20x20
10x10
5x5 | 30x30

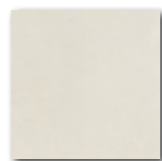
R10

B

V3



DAR34720
PEI 5 \varnothing 74 | m²
mat | matt
slonová kost | ivory



DAR26720
PEI 5 \varnothing 90 | m²
mat | matt



DAR12720 (SET)
PEI 5 \varnothing 94 | m²
mat | matt



DDM06720 (SET)
PEI 5 \varnothing 72 | set
mat | matt



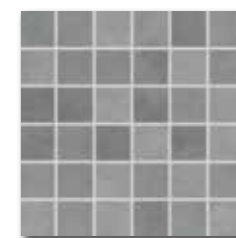
DAR34724
PEI 4 \varnothing 74 | m²
mat | matt
tmavě šedá | dark grey



DAR26724
PEI 4 \varnothing 90 | m²
mat | matt



DAR12724 (SET)
PEI 4 \varnothing 94 | m²
mat | matt



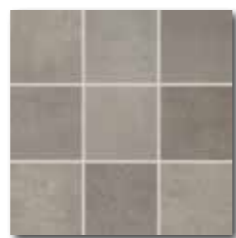
DDM06724 (SET)
PEI 4 \varnothing 72 | set
mat | matt



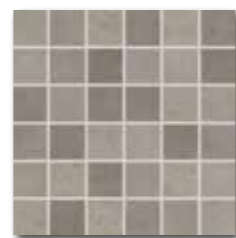
DAR34721
PEI 4 \varnothing 74 | m²
mat | matt
hnědošedá | brown-grey



DAR26721
PEI 4 \varnothing 90 | m²
mat | matt



DAR12721 (SET)
PEI 4 \varnothing 94 | m²
mat | matt



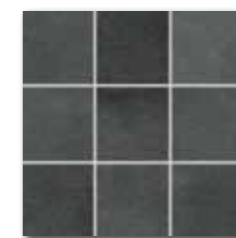
DDM06721 (SET)
PEI 4 \varnothing 72 | set
mat | matt



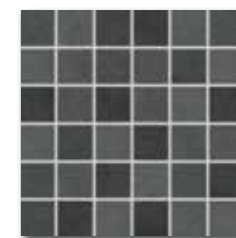
DAR34725
PEI 4 \varnothing 74 | m²
mat | matt
černá | black



DAR26725
PEI 4 \varnothing 90 | m²
mat | matt



DAR12725 (SET)
PEI 4 \varnothing 94 | m²
mat | matt



DDM06725 (SET)
PEI 4 \varnothing 72 | set
mat | matt

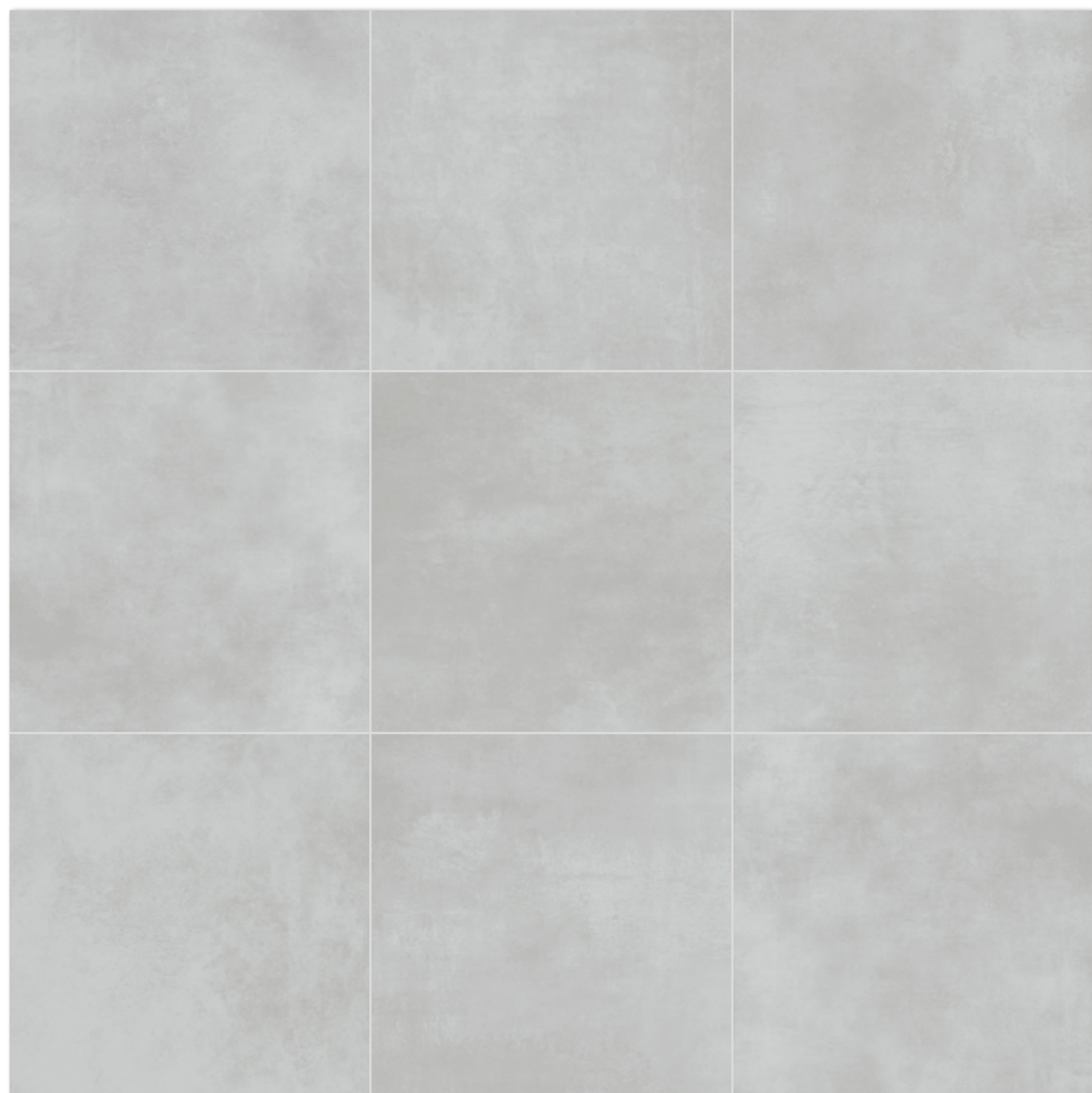
výrobek | product



EN



	cm	mm	EN	ks/m ²	m ²	m ²	m ²	kg	kg/m ²	brutto kg	
dlaždice floor tile	30x30	298x298-8	EN 14411 - G Bla	13	11	1,18	48	56,64	21,0	17,4	1 011
dlaždice floor tile	20x20	198x198-10	EN 14411 - G Bla	23	25	0,92	57	52,44	20,1	21,9	1 174
dlaždice floor tile	10x10	98x98-10	EN 14411 - G Bla	10	11	0,91	56	50,96	19,9	21,9	1 142
mozaika set 30x30 cm mosaic sheet 30x30 cm	5x5	48x48-10	EN 14411 - G Bla	3	11	0,27	-	-	5,9	21,9	-

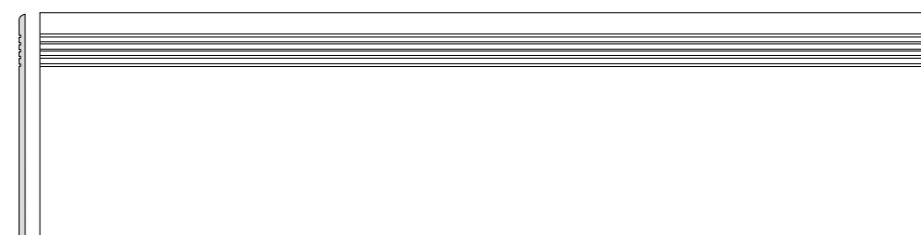


Všechny výrobky celé série vykazují velké odchylky odstínové difference V3. | All products of the entire batch show big deviations in shade difference V3.

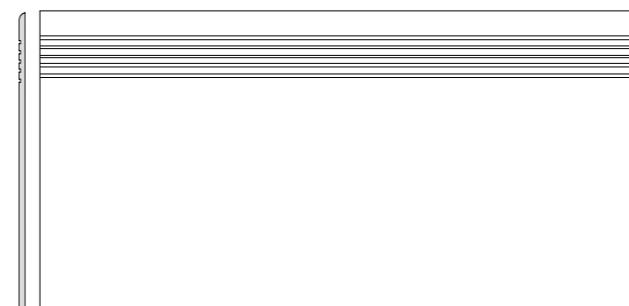
Před pokládkou doporučujeme jednotlivé obkladové prvky vybírat z několika kartonů a výslednou plochu komponovat podle inspirativní fotodokumentace z katalogů RAKO případně z webových stránek www.rako.cz. Žádoucí je kombinace všech jednotlivých designů obkladových prvků včetně jejich natáčení o 90° nebo 180° tak, aby bylo dosaženo vyváženého vzhledu obkládané plochy.

Before laying the tiles, we suggest you select from several cartons and arrange them as illustrated in the inspiration photo documentation in RAKO catalogues or website www.rako.eu, and mix the tiles to achieve the required result including turning them by 90° or 180°.

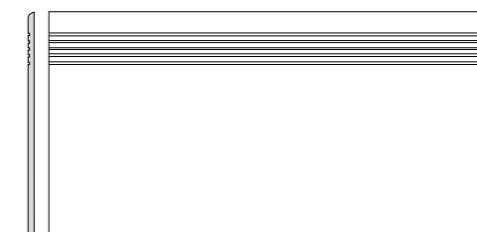
výrobek product	cm	mm	EN	ks/m ²	ks/m ²	m ² /ks	kg/m ²	brutto kg
schodovka step tile	30x120	298x1198x10	STO č. 030 - 059824	5	2,8	1,80	-	40,9
schodovka step tile	40x80	398x798x10	STO č. 030 - 059824	2	3,1	0,64	-	14,1
schodovka step tile	30x60	298x598x10	STO č. 030 - 059824	6	5,6	1,08	40	23,7
sokl skirting plinth	80x9,5	798x95x10	STO č. 030 - 059824	10	13,2	0,76	-	16,7
sokl skirting plinth	60x9,5	598x95x10	STO č. 030 - 059824	13	17,5	0,74	-	16,2
sokl skirting plinth	45x8,5	445x85x8	STO č. 030 - 059824	25	26,1	0,96	-	16,7
schodová tvarovka special step tile	40x80	398x798x10	STO č. 030 - 059824	2	-	-	-	-



DCPVF720 slonová kost | ivory
 DCPVF721 hnědošedá | brown-grey
 DCPVF722 bílá | white
 DCPVF723 světle šedá | light grey
 DCPVF724 tmavě šedá | dark grey
 DCPVF725 černá | black
 PEI 4-5 ○ 86 | ks
 mat | matt



DCP84720 slonová kost | ivory
 DCP84721 hnědošedá | brown-grey
 DCP84722 bílá | white
 DCP84723 světle šedá | light grey
 DCP84724 tmavě šedá | dark grey
 DCP84725 černá | black
 PEI 4-5 ○ 78 | ks
 mat | matt



DCPSE720 slonová kost | ivory
 DCPSE721 hnědošedá | brown-grey
 DCPSE722 bílá | white
 DCPSE723 světle šedá | light grey
 DCPSE724 tmavě šedá | dark grey
 DCPSE725 černá | black
 PEI 4-5 ○ 72 | ks
 mat | matt



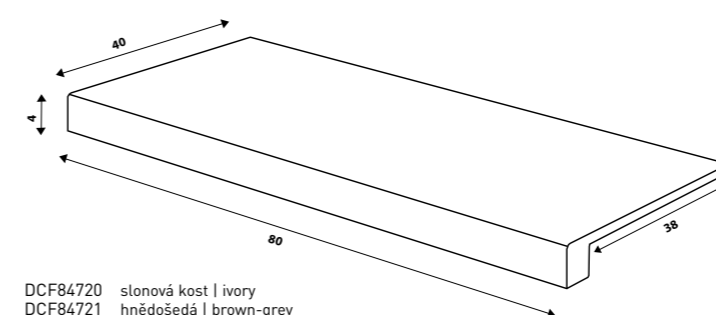
DSA89720 slonová kost | ivory
 DSA89721 hnědošedá | brown-grey
 DSA89722 bílá | white
 DSA89723 světle šedá | light grey
 DSA89724 tmavě šedá | dark grey
 DSA89725 černá | black
 ○ 72 | ks
 mat | matt



DSAS4720 slonová kost | ivory
 DSAS4721 hnědošedá | brown-grey
 DSAS4722 bílá | white
 DSAS4723 světle šedá | light grey
 DSAS4724 tmavě šedá | dark grey
 DSAS4725 černá | black
 ○ 56 | ks
 mat | matt



DSAPS720 slonová kost | ivory
 DSAPS721 hnědošedá | brown-grey
 DSAPS722 bílá | white
 DSAPS723 světle šedá | light grey
 DSAPS724 tmavě šedá | dark grey
 DSAPS725 černá | black
 ○ 54 | ks
 mat | matt



DCF84720 slonová kost | ivory
 DCF84721 hnědošedá | brown-grey
 DCF84722 bílá | white
 DCF84723 světle šedá | light grey
 DCF84724 tmavě šedá | dark grey
 DCF84725 černá | black
 PEI 4-5 ○ 108 | ks
 mat | matt



30x120
 R10
 B
 V3
 R

40x80
 30x60
 R10
 B
 V3
 R

80x9,5
 60x9,5
 R

45x8,5
 R

40x80
 R10
 B
 V3
 R