

# Pytes

## Creating Undertaking & Sharing



Shanghai PYTES Energy Co, LTD  
BATTERY EXPERT-GREEN ENERGY PROVIDER

### LI-ION BATTERY FOR ENERGY STORAGE



# CONTENTS

03	About Us
07	Laboratory Introduction
09	Qualification & Certification
10	Standard Products Introduction
43	Accessories
45	Customer Cases
47	Inverter Compatibility List

# Pytes

As a leading lithium battery solution provider, Pytes is committed to providing energy storage solutions. Started in 2004, with continuous support and technical experience, more than 1,000 Pytes employees are now working to build a greener future.

Grasping the general trend of globalization, Pytes not only has multiple production bases in China, but also runs branches, offices and factories in North America, Europe, Vietnam and other sites to achieve multi-regional coverage of the service network, with faster delivery and quicker response.

Creating, Undertaking, Sharing, we practice our philosophy and fulfill the mission that to deliver safe, reliable and affordable clean energy to home and community for a more carbon-free future.



**\$810M**

Total Asset

**20 Years**

Industry experience



**Pytes**

Since 2004

**1000+**

Employee

**4Gwh**

Annual capacity



# Global Marketing & Service

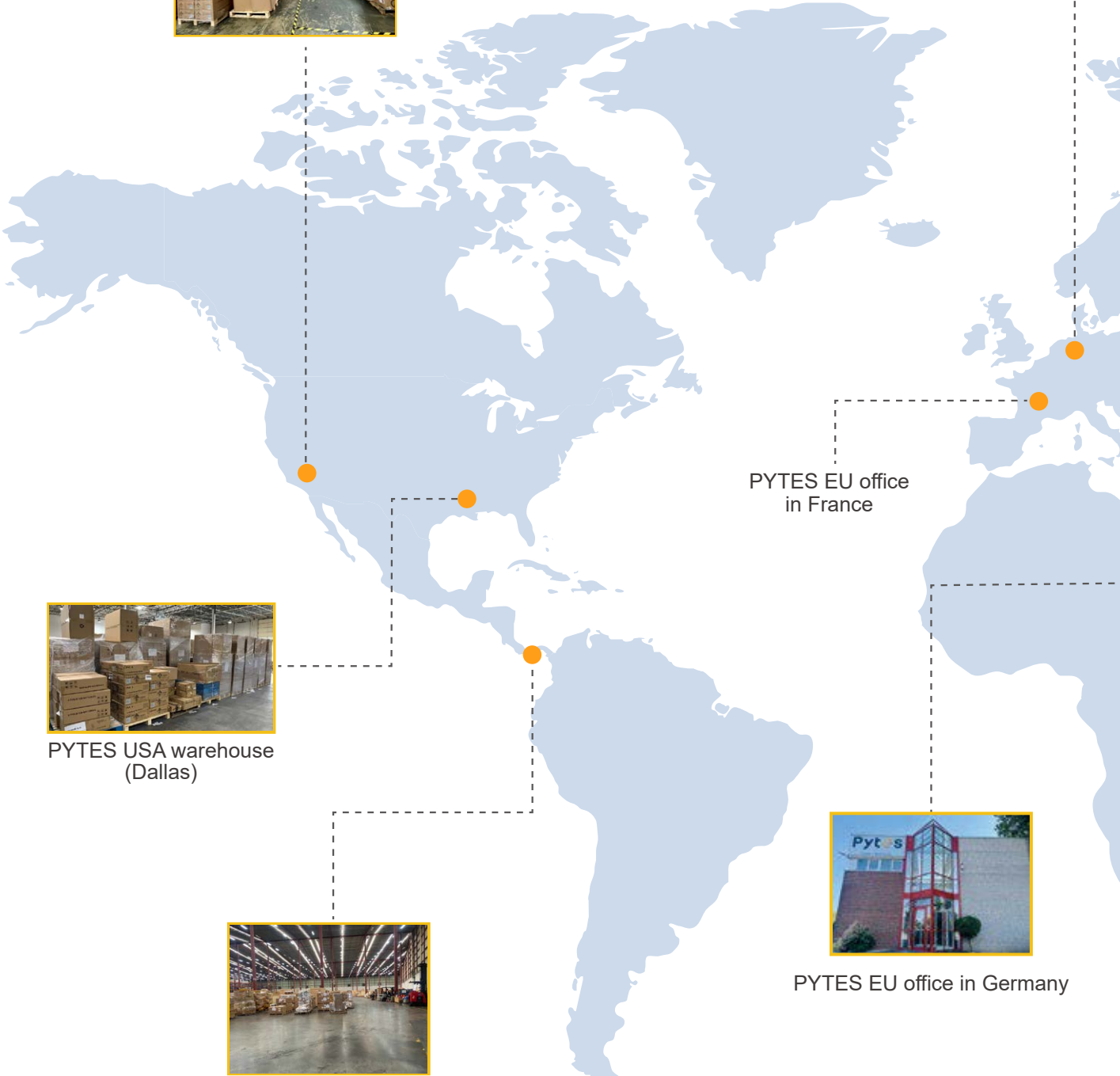
## North America

PYTES USA office & Warehouse  
(Los Angeles)



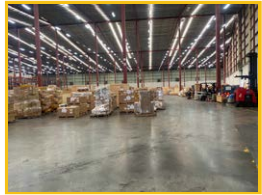
## Europe

PYTES EU office  
(The Netherlands)



PYTES USA warehouse  
(Dallas)

PYTES EU office  
in France



PYTES Panama Warehouse



PYTES EU office in Germany

PYTES Factory in Hungary



Shandong PYTES New Energy Technology



Shandong PYTES Electronics



**China**



Headquarter/  
Factory in Shanghai

**Vietnam**



Factory in Ho Chi Minh City



# SGS, TÜV, BV, DEKRA

Accredited Cooperative Testing Labs

---

## Mechanical Tests



Vibration Test



Drop Test



Shocking Test



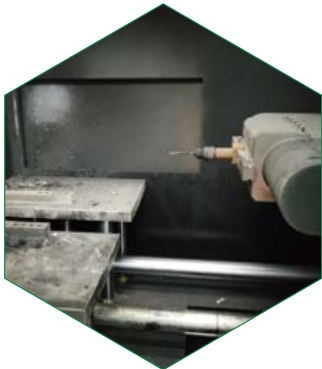
Safety Tests



Short Circuit Test



Impact Test



Needle Test

Environmental Tests



Altitude Simulation



Thermal Shock

Electrical Tests









# Standard Products

## Introduction



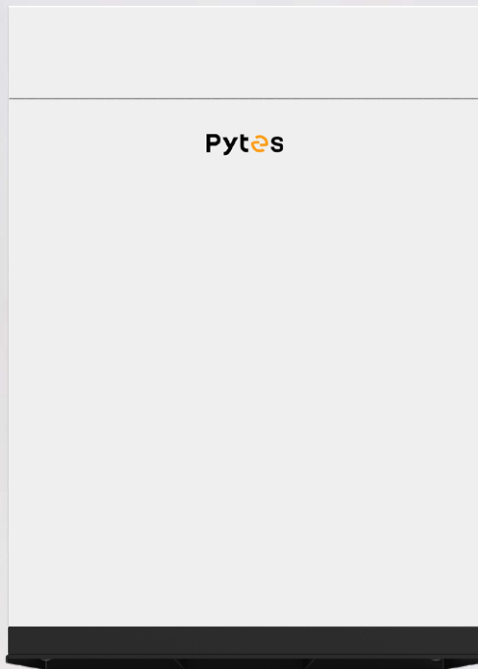
**E-BOX 4850G**



**V5°α**



**E-BOX 12100**



**R-BOX**



**V-BOX-OC**



HV48100



Pi LV1



E-BOX 48100R on R-Bracket

# V5° / V5°α



## Features

---



Remote Monitoring and Upgrading



Higher Charge/Discharge Rate



Wider Operation Temperature



Higher Energy Density



Greater scalability

10 Years Warranty



UN38.3



CEC SGIP

# V5°/ V5°α Specs

---

## Electrical

Nominal Voltage	51.2V
Voltage Range	47.5V~57.6V
Nominal Capacity	100Ah
Nominal Energy	5.12kWh
Recommended Charge/ Discharge Current <sup>[1]</sup>	75A
Max Continuous Charge/ Discharge Current <sup>[2]</sup>	100A
Peak Charge/Discharge Current	101A~120A(3min) ; 121A~180A(15sec)

[1], [2]: The recommended and Max continuous charge and discharge current is for a battery cell temperature within 10°C~40°C(50°F~104°F) to consider. It will result in a derating on current if out of the temperature range.

## General

Connection Options	V5°: PHOENIX M6 Bolt V5°α: Amphenol SurLok Plus 8.0mm
Chemistry	LFP
Communication Protocol	CAN / RS485
Dimensions (L x W x H)	442 x 530 x 140 mm (3.2U) / 17.4 x 20.87 x 5.51 inch (3.2U)
Weight	44 kg / 97 lbs
Ambient Temperature	-10°C~50°C/14°F~122°F
Round-Trip Efficiency	≥95%
Cycle Life <sup>[3]</sup>	≥6000Cycles
Warranty	10 Years

[3]: Test conditions 0.2C Charging/Discharging, @25°C(77°F), 90% DoD.

## Add-on Functionalities

WIFI Connection	Remote monitoring and upgrade
Heating Pad	Temperature Rise: 10°C/ h/18°F/h Operation Temperature: -18°C~10°C/-0.4°F~50°F
Scalability	16 pcs (81.92kWh) in a group 6 groups (491.52kWh) in a system w / a Hub

## Certifications (On-going)

UL9540 Ed.2 (2020), UL9540A, UL1973, CEC, SGIP, CE, IEC62619, UN38.3

# V-BOX-OC



## V-BOX-OC Specs

### Mechanical

Load capacity	4 x V5° / 4 x V5°α
Structure	Busbar & DC Circuit Breaker Integrated
Dimensions(L x W x H)	645 x 395 x 1395 mm / 25.4 x 15.6 x 54.9 inch
Weight	88 kg / 194 lbs
Mount	Floor mount
Enclosure rating	IP55
Enclosure material	SGCC(Galvanized steel)
Cooling	Natural convection

# SMART MONITOR



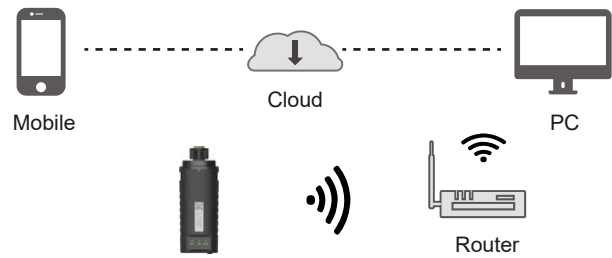
## Smart Monitor feature

- Real-time Monitoring
- Data Visualization
- Remote Upgrading
- Error Detection
- Alarm Notification

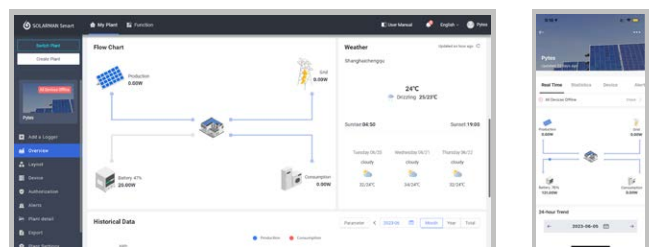
162002100019  
LSW-5



## Diagram



## WEB/APP





# V-BOX-IC

Effortless to Upgrade  
Your System in 3 minutes



## Features



Easy to install with minimal tools required



Scalable to meet demands



Capable of easy mobility and secure fixation



Less footprint

## Multi Combinations Customized



Basic Rack



Mobile Cabinet



Scalable System

# V-BOX-IC Specs

---

## Mechanical

Load capacity	3 x V5° / 3 x V5°α
Dimensions(L x W x H)	533 x 616 x 650 mm / 21.0 x 24.3 x 25.6 inch
Weight	42.2 kg / 93 lbs
Mount	Floor mount
Enclosure rating	IP20
Enclosure material	SGCC(Galvanized steel)
Cooling	Natural convection

---

# V-BOX-IC se



## Specs

---

### Mechanical

Load capacity	3 x V5° / 3 x V5°α
Dimensions(L x W x H)	533 x 565 x 660 mm / 21.0 x 22.2 x 26.0 inch
Weight	27.7 kg / 61.1 lbs
Mount	Floor mount
Enclosure material	SGCC(Galvanized steel)
Cooling	Natural convection

# V-BOX-NEMA 3



## Features



Easy to install



Floor / Wall mount



Safe & Reliable



Modular & Elegant Design

## Technical Specifications

### Model

Load capacity

Dimensions(L x W x H)

Weight

Mount

Enclosure rating

Enclosure material

Cooling

### V-BOX-NEMA3

2 x V5°

521.5 x 430.9 x 647.4 mm / 20.5 x 17.0 x 25.5 inch

29.5 kg / 65.04 lbs

Floor / Wall mount

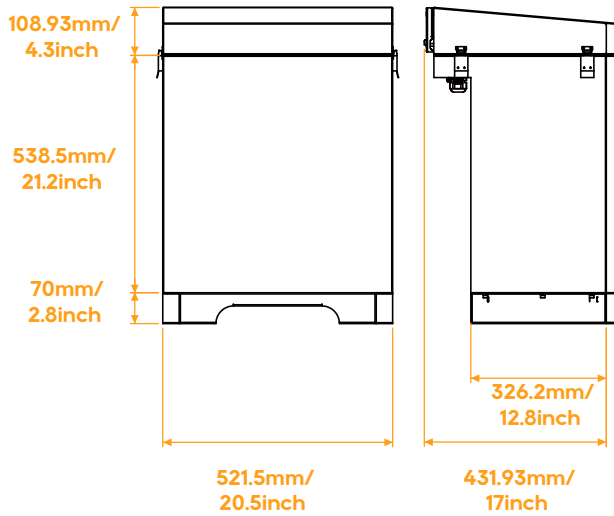
NEMA 3

SGCC(Galvanized steel)

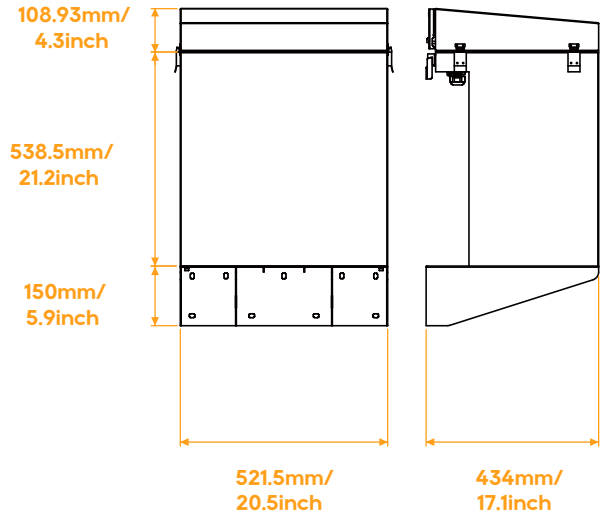
Natural convection

# Mechanical drawing

## Floor Mounting



## Wall Mounting



# 3D image

## Floor Mounting



## Wall Mounting



# Pi LV1



## Features



### Safe

- LFP Chemistry, Field-Proven BMS Integrated in Individual Module, DC Breaker & Fuse Adapted



### Powerful

- Up to 14.08kW Continuous Output



### Plug-and-play (15-min installation)

- Quick Connectors, Hand-wiring Free



### Scalable on Demand

- Flexible Configuration from 10.24 to 30.72 kWh per Stack, Up to 4 Stacks



### Outdoor Rated Enclosure

- Water & Dust proof for Both Indoor and Outdoor



### Smart

- Remote Upgrading & Monitoring

# Pi LV1

## Battery Module Unit:

Cell Type	LFP
Nominal Energy	5.12kWh
Nominal Voltage	51.2V
Voltage Range	47.5V~56.8V
Nominal Capacity	100Ah
Recommended Continuous Discharge Current	50A
Recommended Continuous Charge Current	50A
Certifications	CE, IEC62619, UL1973, UN38.3, UL9540, UL9540A



Model	2	3	4	5	6
Cell Type	LFP				
Nominal Voltage	51.2V				
Voltage Range	47.5V~56.8V				
Nominal Capacity	100Ah				
Nominal Energy	10.24kWh	15.36 kWh	20.48 kWh	25.6 kWh	30.72 kWh
Recommended Power	5.12kW	7.68kW	10.24kW	10.24kW	10.24kW
Dimensions (L x W x H) (mm/inch)	681 x 242 x 800 26.8 x 9.5 x 31.5	681 x 242 x 1060 26.8 x 9.5 x 41.7	681 x 242 x 1320 26.8 x 9.5 x 52.0	681 x 242 x 1580 26.8 x 9.5 x 62.2	681 x 242 x 1840 26.8 x 9.5 x 72.4
Weight(kg/lbs)	125/275.6	178.3/393.1	231.6/510.6	284.9/628.1	338.2/745.6
Efficiency	≥95%				
Communication	CAN, RS485				
Cycle Life	≥6000Cycles				
Protection level	IP55				
Ambient Temperature	-10°C~55°C / 14°F~131°F				
Storage Temperature	Within 1 month: -20°C~50°C / -4°F~122°F 1~3 months: -10°C~40°C / 14°F~104°F 3~12 months: 0°C~30°C / 32°F~86°F				

\* The maximum power and peak power are tested based on an ambient temperature of 25 °C.

# E-BOX 48100R



## Features



### Scalable

- From 5.12kWh to 491.52kWh



### Long-lasting

- $\geq 6000$  Cycles @ 90% DoD



### Safe & Reliable

- Tier 1 Automotive Grade A LiFePO<sub>4</sub> cells
- Self-designed & Field-proven BMS



### Compact, Flexible and Easy Install



### Wide Compatibility

10 Years Warranty



UN38.3



CEC SGIP

# E-BOX 48100R Specs

---

## Electrical

Nominal Voltage	51.2V
Voltage Range	47.5V~57.6V
Nominal Capacity	100Ah
Nominal Energy	5.12kWh
Recommended Charge/ Discharge Current	50A (2.56kW dc)
Maximum Charge/ Discharge Current	50A (2.56kW dc)
Peak Discharge Current	102A (5.22kW@15s)

## General

Chemistry	LFP
Communication Protocol	CAN/RS485
Dimensions (L x W x H)	440 x 620 x 117mm (2.6U) / 17.3 x 24.4 x 4.6 inch (2.6U)
Weight	51 kg / 112.5 lbs
Ambient Temperature	-10°C~50°C / 14°F~122°F
Round-Trip Efficiency	≥95%
Cycle Life*	≥6000Cycles
Warranty	10 Years

\* Test Condition 0.5C, 25°C @90%DoD

## Certifications

UL9540 Ed.2 (2020), UL9540A, UL1973, CEC, SGIP, CE, IEC62619, UN38.3



# R-BOX-NEMA 3



## Features



Easy to install



Floor / Wall mount



Safe & Reliable



Modular & Elegant Design

## Technical Specifications

### Model

Load capacity

Dimensions(L x W x H)

Weight

Mount

Enclosure rating

Enclosure material

Cooling

### R-BOX-NEMA3

2 x E-BOX 48100R

530.0 x 400.3 x 734.7mm / 21.0 x 15.7 x 28.9inch

27.7 kg / 61.06 lbs

Floor / Wall mount

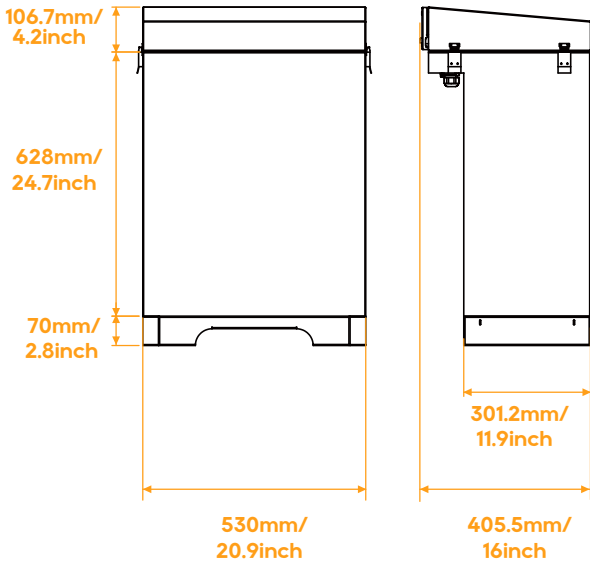
NEMA 3

SGCC(Galvanized steel)

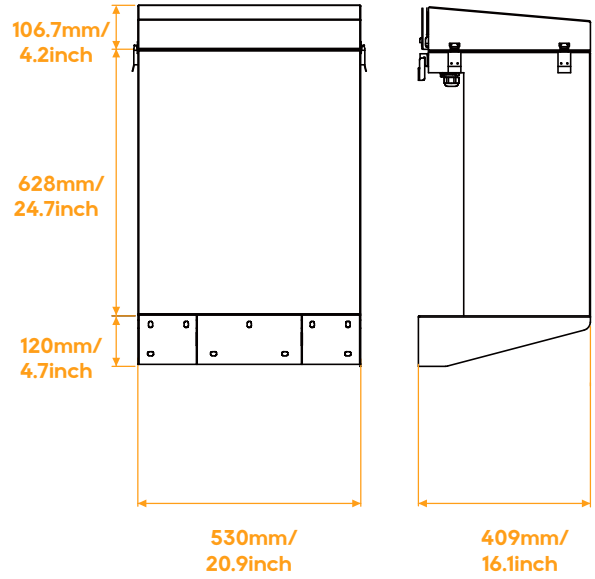
Natural convection

# Mechanical drawing

## Floor Mounting



## Wall Mounting



# 3D image

## Floor Mounting



## Wall Mounting



# R-BOX

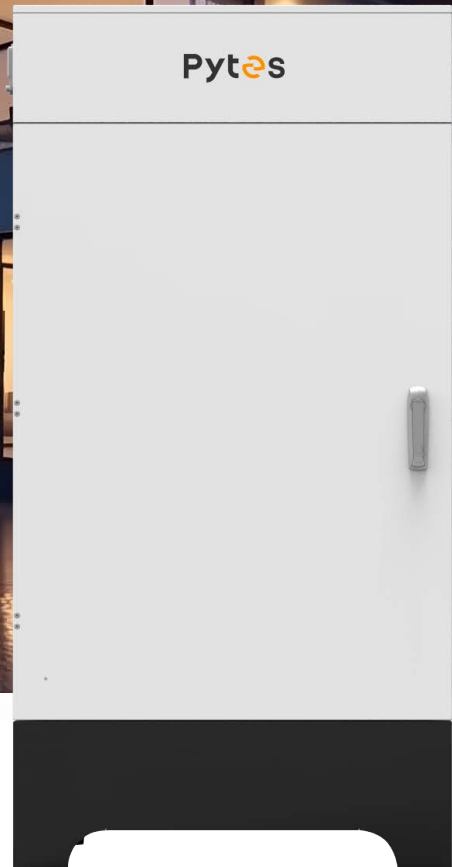


## R-BOX Specs

### Mechanical

Load capacity	2 x E-BOX 48100R
Dimensions(L x W x H)	280 x 510 x 700 mm (780 mm H w/holder)/ 11.0 x 20.1 x 27.5 inch (30.8 inch H w/holder)
Weight	17 kg / 37.5 lbs
Mount	Wall / Floor mount
Enclosure rating	IP20
Enclosure material	Cool-rolled steel
Cooling	Natural convection

# R-BOX-OC

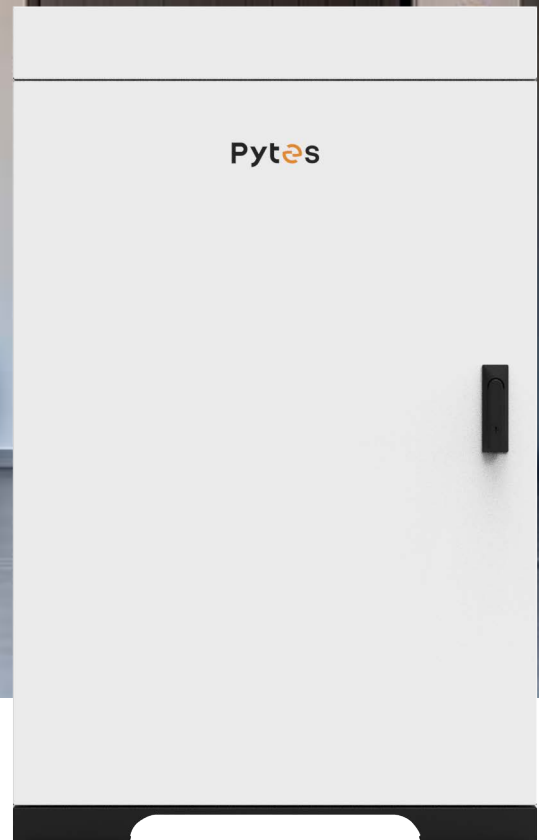


## R-BOX-OC Specs

### Mechanical

Load capacity	4 x E-BOX 48100R
Structure	Busbar & DC Circuit Breaker Integrated
Dimensions(L x W x H)	800 x 330 x 1575 mm / 31.5 x 13.0 x 62.0 inch
Weight	80 kg / 176.4 lbs
Mount	Floor mount
Enclosure rating	IP55
Enclosure material	SGCC(Galvanized steel)
Cooling	Natural convection

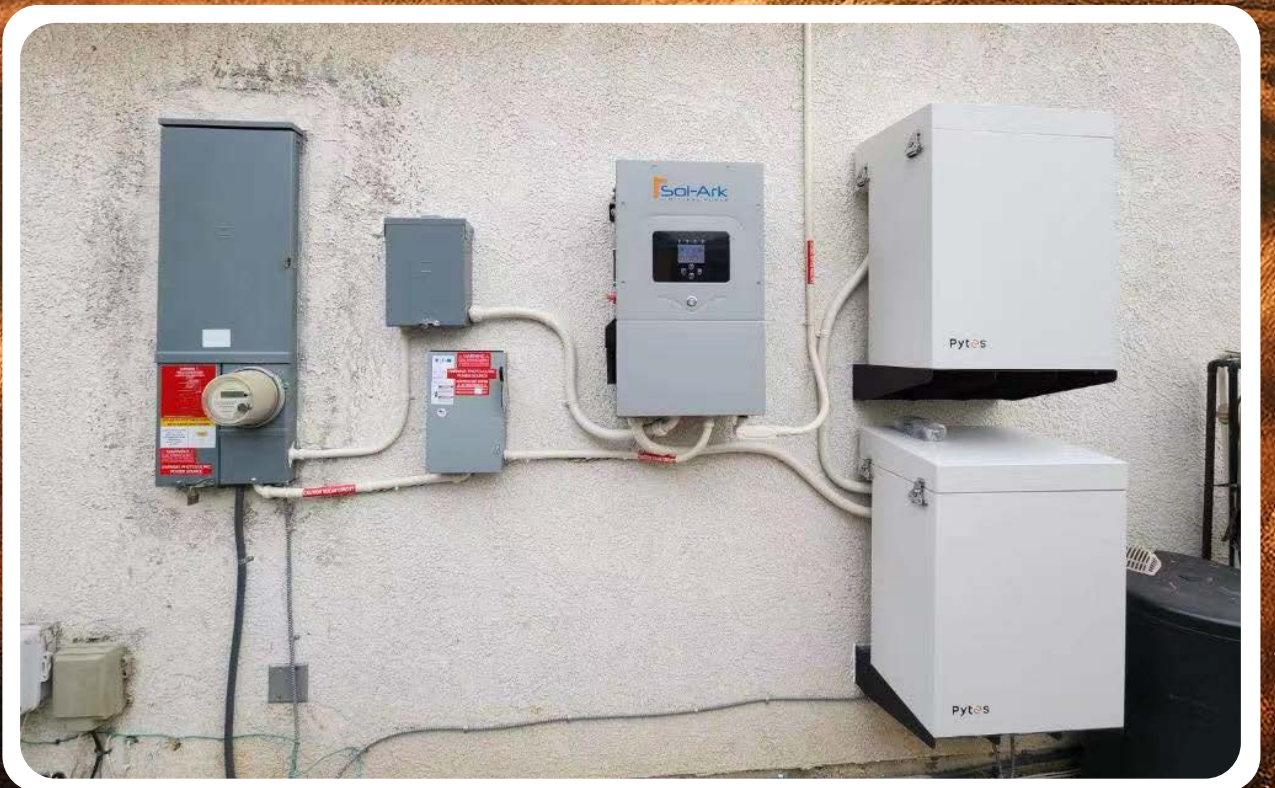
# Forest-RB Plus



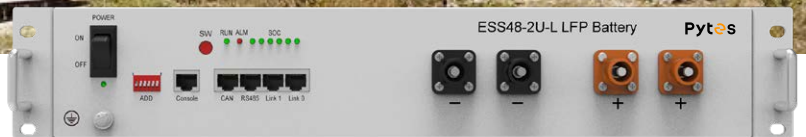
## Forest-RB Plus Specs

### Mechanical

Load capacity	6 x E-BOX 48100R
Structure	Busbar Integrated
Dimensions(L x W x H)	720 x 400 x 1150 mm / 28.3 x 15.7 x 45.3 inch
Weight	68 kg / 150 lbs
Mount	Floor mount
Enclosure rating	IP20
Enclosure material	SGCC(Galvanized steel)
Cooling	Natural convection



# E-BOX 4850



## Features



### Scalable

- From 2.4kWh to 115.2kWh



### Long-lasting

- $\geq 6000$  Cycles @ 80% DoD



### Safe & Reliable

- Tier 1 Automotive Grade A LiFePO<sub>4</sub> cells
- Self-designed & Field-proven BMS



### Compact, Flexible and Easy Install



### Wide Compatibility

10 Years Warranty

 **UN38.3**

# E-BOX 4850 Specs

---

## Electrical

Nominal Voltage	48V
Voltage Range	45V~54V
Nominal Capacity	50Ah
Nominal Energy	2.4kWh
Recommended Charge/ Discharge Current	25A
Maximum Charge/ Discharge Current	50A

## General

Chemistry	LFP
Communication Protocol	RS485/CAN
Dimensions (L x W x H)	440 x 410 x 89 mm (2U) / 17.3 x 16.1 x 3.5 inch
Weight	25 kg / 55.1 lbs
Ambient Temperature	-10°C~50°C
Round-Trip Efficiency	≥95%
Cycle Life*	≥6000Cycles
Warranty	10 Years
Connect style	Parallel
Storage Temperature	Within 1month: -20~55°C, 1-3months: 0~35°C, 3-12months: 20~25°C

\* Test Condition 0.5C, 25°C @80%DoD

## Certifications

UN38.3, CE, IEC62619, KC



# E-BOX 4850G



## Features



### Scalable

- From 2.4kWh to 115.2kWh



### Compact, Flexible and Easy Install



### Long-lasting

- $\geq 6000$  Cycles @ 80% DoD



### Wide Compatibility



### Safe & Reliable

- Tier 1 Automotive Grade A LiFePO<sub>4</sub> cells
- Self-designed & Field-proven BMS

10 Years Warranty



# E-BOX 4850G Specs

---

## Electrical

Nominal Voltage	48V
Voltage Range	45V~54V
Nominal Capacity	50Ah
Nominal Energy	2.4kWh
Recommended Charge/ Discharge Current	25A
Maximum Charge/ Discharge Current	50A

## General

Chemistry	LFP
Communication Protocol	CAN/RS485
Dimensions (L x W x H)	440 x 450 x 80 mm / 17.3 x 17.7 x 3.2 inch
Weight	23.5 kg / 51.8 lbs
Ambient Temperature	Charge: 0°C~45°C Discharge: -10°C~50°C
Round-Trip Efficiency	≥ 95%
Cycle Life*	≥ 6000 Cycles
Warranty	10 Years
Connect style	Parallel
Storage Temperature	Within 1 month: -20~45°C, 1-3 months: -20~35°C, 3-12 months: 20~25°C

\* Test Condition 0.5C, 25°C @80%DoD

## Certifications

UN38.3, CE, IEC62619, KC

# E-BOX 12100



## Features



### Powerful

- 1C Discharge Rate, Continuous Output Power



### Reliable

- Upgraded BMS
- Heating Pad Integrated for Wider Operation Temperature



### Long-lasting

- $\geq 4000$  Cycles @ 80% DoD



### Scalable

- Easy to Expand Up to 19.2kWh, Maximum 2 in Series per 8 in Parallel



### Smart

- Remote Monitoring & Upgrading



### Wide Applicability

- High Protection Level Enriches More Applications

5 Years Warranty

CE UN38.3

# E-BOX 12100 Specs

---

## Electrical

Nominal Capacity	100Ah
Nominal Voltage	12.8V
Voltage Range	10.8V~14.4V
Maximum Continuous Charging Current	50A
Maximum Continuous Discharge Current	100A
Cycle Life	4000Cycles (@80%DoD)

## Environment

Working Temperature	-10°C~55°C / 14°F~131°F
Storage Temperature	Within 1 month: -20°C~55°C / -4°F~131°F, 1-3 months: 0°C~35°C / 32°F~95°F, 3-12 months: 20°C~25°C / 68°F~77°F
Operating Relative Humidity	0%~95%RH No Condensation

## Structure

Dimension( W x D x H )	320 x 166 x 200 mm / 12.6 x 6.5 x 7.9 inch
Weight	15.2 kg / 33.6 lbs
BMS Communication	RS485 / CAN
System Connection	Up to 2S8P
Heating	Supported

## Certification

UN38.3, CE, IEC62619

## Warranty

5 Years

# HV48100



## Features

---



Higher Energy Density



Lower Resistive Losses



Superior Performance



Remote Upgrading & Monitoring



Enhanced Safety Features

10 Years Warranty



UN38.3



# HV48100 Specs

## HV48100 BCU

Controller Working Voltage	200V~870V
Self-consumption Power	7.56W
Dimensions ( W x D x H )	484 x 510 x 140 mm / 19.1 x 20.1 x 5.5 inch
Weight	13.3 kg / 29.3 lbs
Communication	CAN, RS485, Dry Contact, WiFi

## HV48100 BMU

Cell Type	LFP
Nominal Energy	5.12kWh
Nominal Voltage	51.2V
Nominal Capacity	100Ah
Continuous Discharging/Charging Current	50Adc
Voltage Range	45.5~58V
Depth of Discharge	90%
Dimensions ( W x D x H )	484 x 530 x 140 mm / 19.1 x 20.9 x 5.5 inch
Weight	43 kg / 94.8 lbs
Communication	CAN, RS485
Cycle Life	≥6000Cycles
Operation Temperature	Charge: 0°C~45°C(32°F~113°F), Discharge: -10°C~50°C(14°F~122°F)
Storage Temperature	Within 1month: -20°C~50°C(-4°F~122°F) 1-3months: -10°C~40°C(14°F~104°F) 3-12months: > 0°C~30°C(32°F~86°F)

## HV48100 System

System Energy	5.12kWh x n
System Voltage	51.2V x n
System Capacity	100Ah
Battery System Charge Upper-Voltage	58V x n
Battery System Discharge lower-Voltage	45.5V x n
Continuous Discharging/ Charging Current	50Adc
BCU Model	HV48100 BCU
BMU Model	HV48100 BMU
BMU Qty. (Optional)	5~15
Depth of Discharge	90%
Dimensions ( W x D x H )	600 x 640 x 1555 mm / 23.6 x 25.2 x 61.2 inch
Weight	89.6 kg + 13.3 kg + 43 kg x n / 197.5 lbs + 29.3 lbs + 94.8 lbs x n
Communication	CAN, RS485, Dry Contact, WiFi
Cycle Life	≥6000 cycles
Operation Temperature	Charge: 0°C~45°C(32°F~113°F), Discharge: -10°C~50°C(14°F~122°F)
Storage Temperature	Within 1month: -20°C~50°C(-4°F~122°F) 1-3months: -10°C~40°C(14°F~104°F) 3-12months: > 0°C~30°C(32°F~86°F)
Operation Humidity	0~95%, No Condensation
Protection level	IP20

## Certifications

UL9540 Ed.2 (2020), UL9540A, UL1973, CE, IEC62619, UN38.3

# HV4850



## Features

---



Higher Energy Density



Lower Resistive Losses



Superior Performance



Remote Upgrading & Monitoring



Enhanced Safety Features

10 Years Warranty

CE UN38.3

# HV4850 Specs

---

## HV4850 BCU

Voltage Range	200V~900V
Communication	RS232/RS485/CAN/Dry Contact/WiFi
Dimensions	W440mm x D450mm x H120mm
Weight	13kg

## HV4850 BMU

Cell Type	LFP
Nominal Energy	2.4kWh
Nominal Voltage	48Vdc
Nominal Capacity	50Ah
Charging Voltage	53.25V
Discharging Cut-off Voltage	41.25V
Communication	RS232/RS485/CAN
Charging Temperature	0~55°C
Discharging Temperature	-10~55°C
Storage Temperature	-20~45°C
Cycle Life*	6000Cycles
Dimensions	W440mm x D450mm x H80mm
Weight	23kg

## HV4850 System

Cell Type	LFP
Expansion	16
Nominal Energy	38.4kWh
Nominal Voltage	768Vdc
Nominal Capacity	50Ah
Battery System Charging Voltage	852Vdc
Discharging Cut-off Voltage	672Vdc
Continuous Charging/Discharging Current	25A (0.5C)
Max Charging/Discharging Current	50A(1C)
Peak Discharging Current	100A@15s
Depth of Discharge	80%
Round-trip Efficiency	96%
External Communication	RS485/CAN/Dry Contact/Wifi
Monitoring Communication	RS232
Charging Temperature	0~55°C
Discharging Temperature	-10~55°C
Storage Temperature	-20~45°C
Cycle Life*	6000Cycles
Warranty	10 Years
Rack Dimensions	W536mm x D513mm x H940mm
System Weight	381kg
Protection level	IP20
Certifications	CE/IEC62619/UN38.3

## Certifications

UN38.3, CE, IEC62619



# ST20



## Features



### Smart

- Energy Control Box on Top



### Scalable

- Up to 20 kWh (4 modules) per Stack



### Compact

- Brick-shaped Modular Design, Easy Installation, Save Labor Costs



### Elegant

- Modern design, High Protection Suitable for Indoor & Outdoor Installation



### Cost-effective

- Especially Applicable to High Electricity Price Areas & High Subsidy Areas

**10 Years Warranty**

**CE UN38.3**

# ST20

---

## Module

Number of modules	4
Total Energy (25 ± 2°C, 0.5C, New Battery State)	20.48 kWh
Nominal Voltage	409.6 V
Operating Voltage Range	320~467.2 V
Communication	CAN
Dimensions ( W x D x H )	600 x 390 x 1025 mm / 23.6 x 15.4 x 40.4 inch
Weight	228 ± 4 kg / 502.7 ± 8.8 lbs
Operating Temperature	Charge: 0°C~50°C Discharge: -20°C~55°C
Cell Type	LFP
Standard Capacity	50Ah (25 ± 2°C, 0.5C, New Battery State)
Nominal Capacity	5.12kWh
Depth of Discharge	80%(Recommend)、100%(Max)
Operating Voltage	80~116.8V
Nominal Voltage	102.4V
Charge /Discharge Current	Recommend 25A(0.5C), Max 45A(1C)
Weight	51 ± 2 kg / 112.4 ± 4.4 lbs
Dimensions ( W x D x H )	600 x 390 x 229 mm / 23.6 x 15.4 x 9.1 inch
Recommend Storage Temperature	5°C ~ 35°C / 41°F~95°F
Humidity	5%~95%
Altitude	≤4000m
Warranty	10 years

## Energy Control Box

Dimensions ( W x D x H )	600 x 390 x 165 mm / 23.6 x 15.4 x 6.5 inch
Weight	16 ± 1 kg / 35.3 ± 2.2 lbs

## Certifications

UN 38.3 / IEC62619 / CE-EMC

# Accessories

## Brackets



### Brackets for E-BOX 48100R

150219100018 & 150219100019

#### F. & B. Bracket

110409100019

#### R-Bracket (Single Rack)

Single Bracket for 1 pc E-BOX 48100R

Easy to expand up to 8 layers



110409100020

#### R-Bracket (8-in-1)

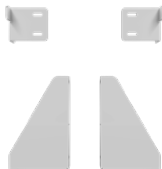
8 layers for holding 8 pcs E-BOX 48100R



### Brackets for V5°

150208100001

#### V-Bracket



110409100178

#### V5 BK1



### Brackets for E-BOX 4850

150208100010 & 150208100011

#### F. & B. Bracket

## Equipments



### HUB

110409100001

#### Hub

Enables communication with multiple groups of batteries

## Busbar:

161506100003

### 300A Junction Box

300A/6 x M5+2 x M10 Terminals



110409100026

### 300A Busbar

300A/12 x M6+2 x M8 Terminals

110409100027

### 600A Busbar

600A/6 x M10+2 x M8 Terminals

## Cables

### Power Cables

161412100244 & 161412100245

### 4AWG/2000mm/Amphenol to M8 Bolt

161412100251 & 161412100252

### 4AWG/160mm/both Amphenol ends

161412100467 & 161412100468

### 4AWG/2000mm/Amphenol to M10 Bolt

161412100461 & 161412100462

### 4/0AWG/2000mm/both M10 ends

161412100465 & 161412100466

### 2/0AWG/2000mm/both M10 ends



### Communication Cables

161412101071

### Standard Communication Cable

Compatible with: Sol Ark, Megarevo, Luxpower, Growatt, APsystems, SMA, Studer

1614121010XX

### Customized Communication Cable

Customized for: Victron, Voltronic, Phocos, MPP, SRNE

161412100916

### Console Cable

USB to RJ45 cable for monitoring & upgrading





**Netherlands**



**Netherlands**



**Germany**



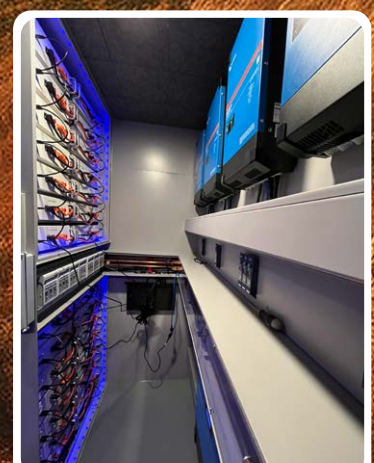
**Africa**



**Germany**



**Australia**



**Austria**



📍  
**Curacao**



📍  
**Puerto Rico**



📍  
**Dominican Republic**



📍  
**Puerto Rico**



📍  
**Indiana**

## Compatibility List of PYTES ESS and Inverters

### Low Voltage



### High Voltage



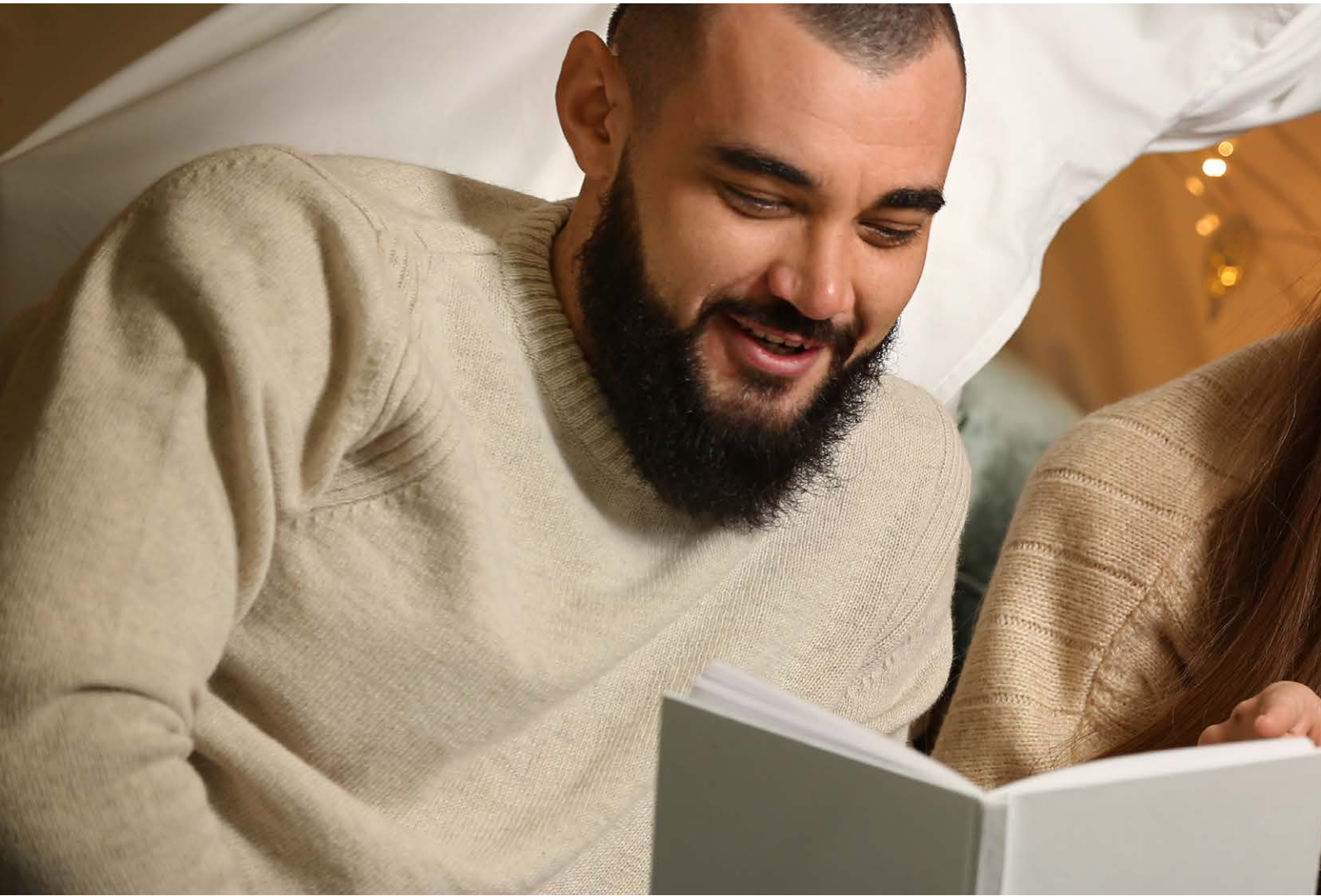
# Pytes

Shanghai PYTES Energy Co., Ltd.  
NO.3492, Jinqian Road, Fengxian District, Shanghai, China

**North America**  
pytesusa@pytesgroup.com

**Europe**  
pytesbv@pytesgroup.com

**AP & Other Regions**  
pytesess@pytesgroup.com



More Catalogs



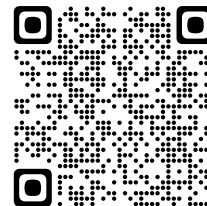
LinkedIn



Facebook



Instagram



YouTube



www.pytesess.com

Pytes